

vmware[®]

Home vSphere Labs

Tom Breakiron

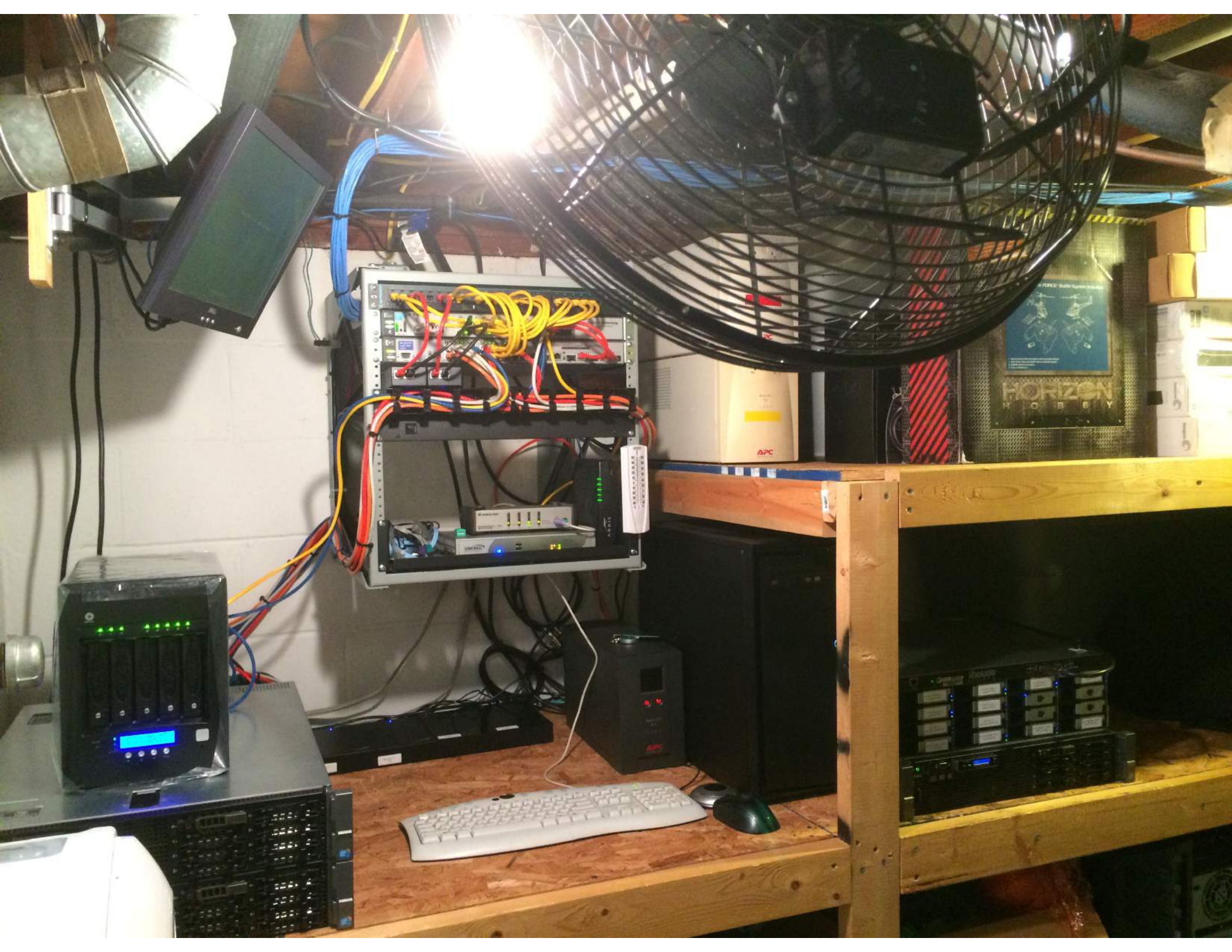
Sr. Consultant, VMware Inc.



VMUG

VMWARE USER GROUP









View_Masters

TB-Win7x64_Full

Win7xt

Win7xt

Win7xt

View_Poc

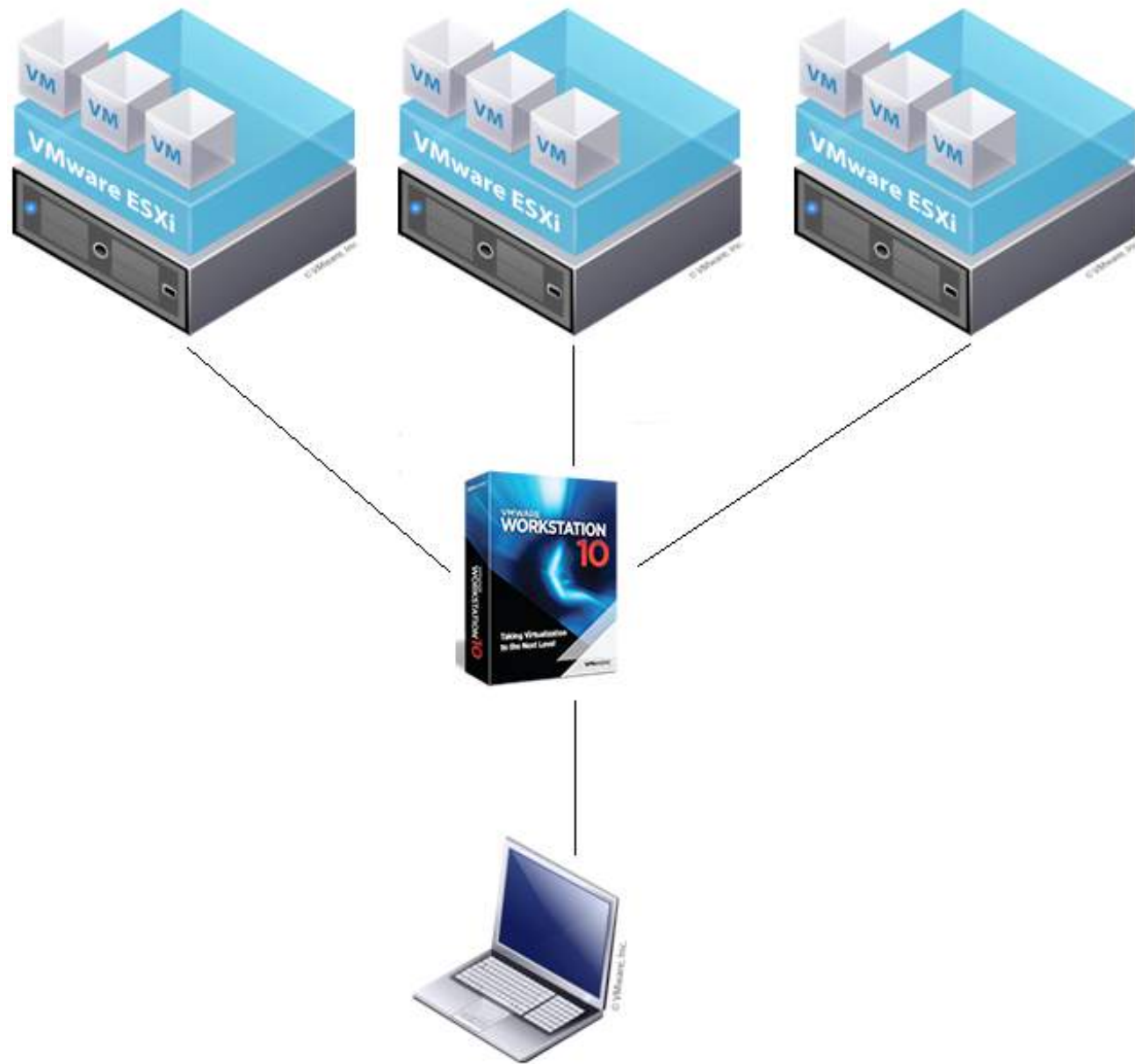
VMwareViewCol

- Actions - TB-Win7x64_Full_Clone-MirageBase
- Open Console
- Power On
- Shut Down Guest OS
- Restart Guest OS
- Migrate...
- Take Snapshot...
- Revert to Latest Snapshot
- Manage Snapshots...
- Clone to Virtual Machine...
- Clone to Template...
- Edit Settings...
- Move To...
- Rename...
- Assign Tag...
- Remove Tag
- Alarms
- All vCenter Actions
- Update Manager

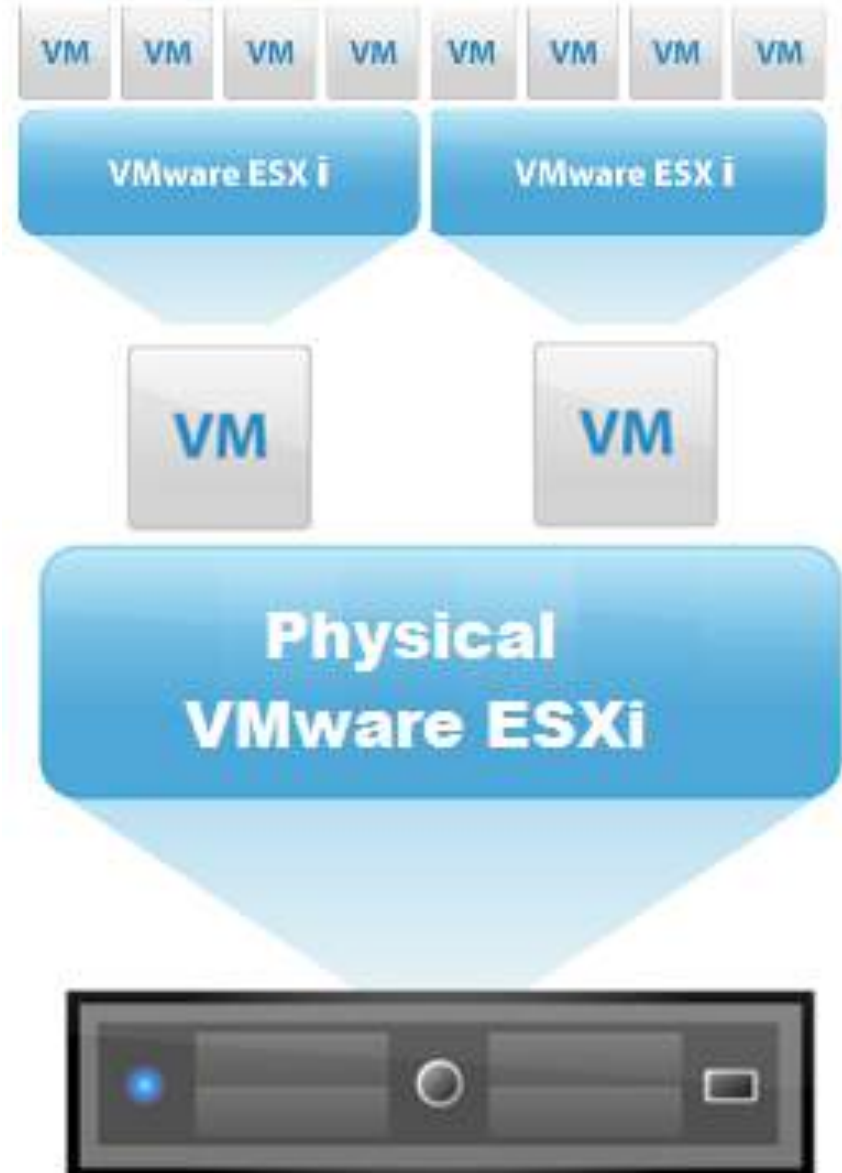
- Power
- Guest OS
- Snapshots
- Migrate...
- Clone to Virtual Machine...
- Clone to Template...
- Convert to Template
- Export System Logs...
- Fault Tolerance
- Edit Resource Settings...
- Export OVF Template...
- VM Storage Policies
- Compatibility
- Custom Attributes
- Edit Notes...
- Add Permission...
- Remove from Inventory
- Delete from Disk

Common Lab Types

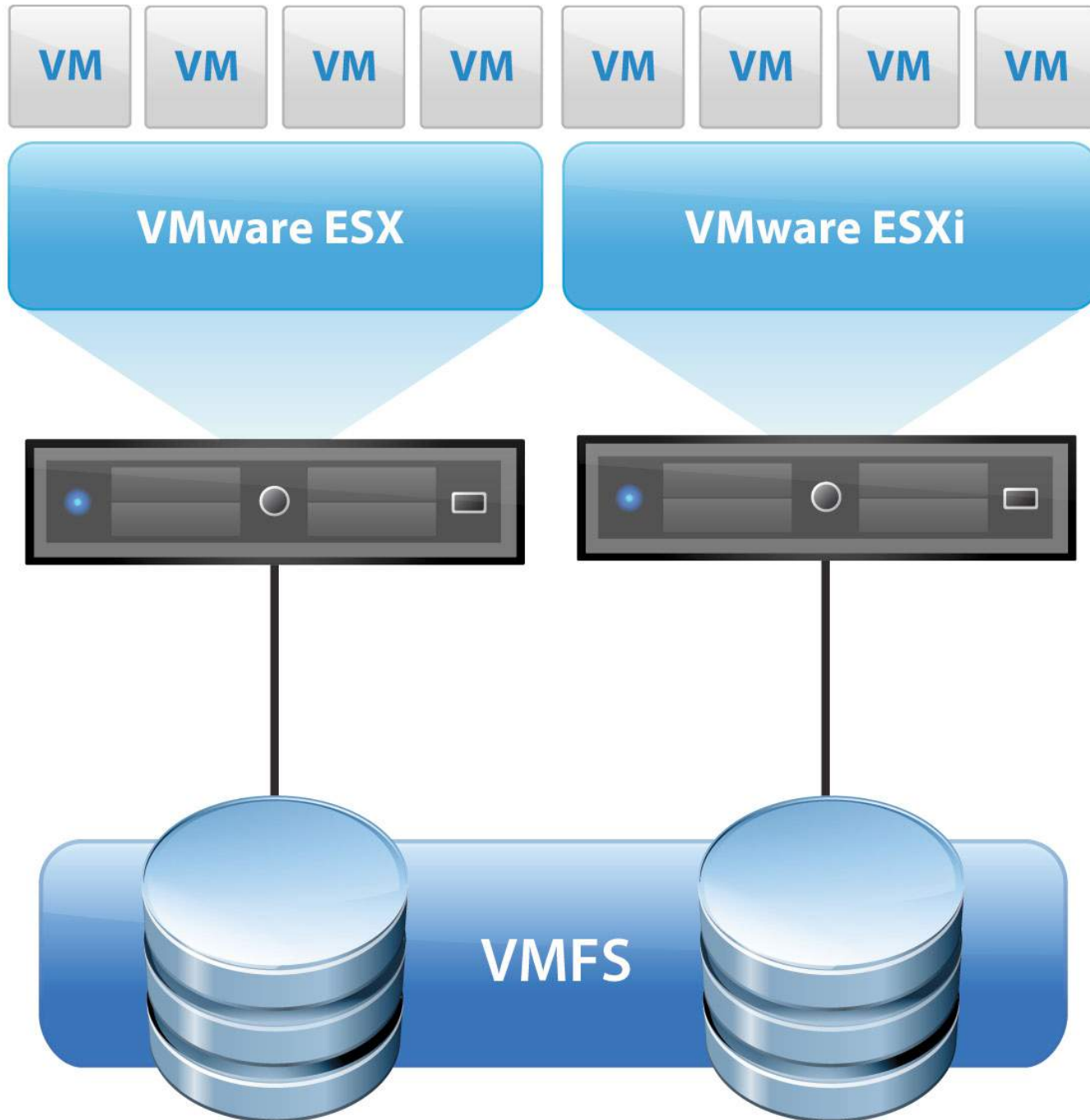
Nested ESXi on Workstation



Nested ESXi on ESXi



Multi-ESXi & Shared Storage





Nested ESXi



View_CPA-S2_ESXi1

- Summary
- Resource Allocation
- Performance
- Tasks & Events
- Alarms
- Console
- Permissions
- Maps
- Storage Views
- Update Manager
- vShield

General

Guest OS: VMware ESXi 5.x
VM Version: vmx-10
CPU: 6 vCPU
Memory: 16384 MB
Memory Overhead: 208.61 MB

VMware Tools: ✔ Running (Current)
IP Addresses: 192.168.15.29

DNS Name: view-cpa-s2-esxi-1.hq.intertrick.net
EVC Mode: N/A

State: Powered On
Host: esxi2.hq.intertrick.net
Active Tasks:
vSphere HA Protection: ✔ Protected

Resources

Consumed Host CPU: **143 MHz**
Consumed Host Memory: **1635.00 MB**
Active Guest Memory: **0.00 MB**
[Refresh Storage Usage](#)
Provisioned Storage: **628.11 GB**

Commands

- Shut Down Guest
- Suspend
- Restart Guest
- Edit Settings
- Open Console
- Migrate
- Clone to New Virtual Machine

Annotations

Notes:

View_CPA-S2_ESXi1 on esxi2.hq.intertrick.net

File View VM

```
VMware ESXi 5.5.0 (VMKernel Release Build 2302651)

VMware, Inc. VMware Virtual Platform

6 x Intel(R) Xeon(R) CPU E5620 @ 2.40GHz
16 GiB Memory
```

Download tools to manage this host from:
<http://view-cpa-s2-esxi-1/>
<http://192.168.15.29/> (STATIC)
[http://\[fe80::250:56ff:feb6:6ade1\]/](http://[fe80::250:56ff:feb6:6ade1]/) (STATIC)

<F2> Customize System/View Logs <F12> Shut Down/Restart

Hardware Assisted Virtualization

- **Intel VT-x**

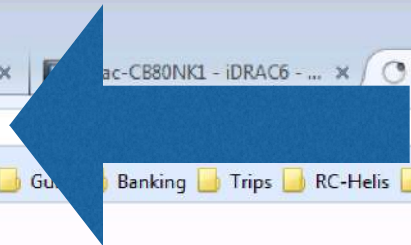
- i5/i7/55XX Xeon “Nehalem” & Later (2009)

- **AMD-V**

- Athlon 64 “Orleans” & Later (2006)

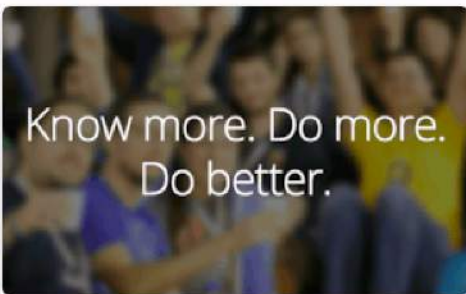
Capabilities Report:

<https://192.168.15.241/mob/?moid=ha-host&doPath=capability>



What is this page?

Search



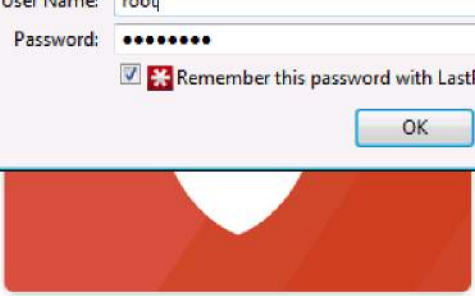
Mozilla Community



Support Mozilla



Mozilla Manifesto



Get Smart on Privacy



Customize Firefox



Mozilla Developer Network



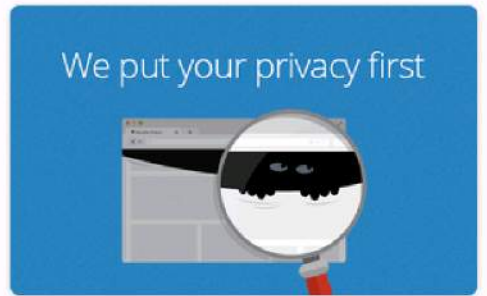
Firefox Marketplace



Mozilla Webmaker



Firefox Sync



Privacy Principles

Authentication Required

A username and password are being requested by https://192.168.15.241. The site says: "VMware vSphere API Browser"

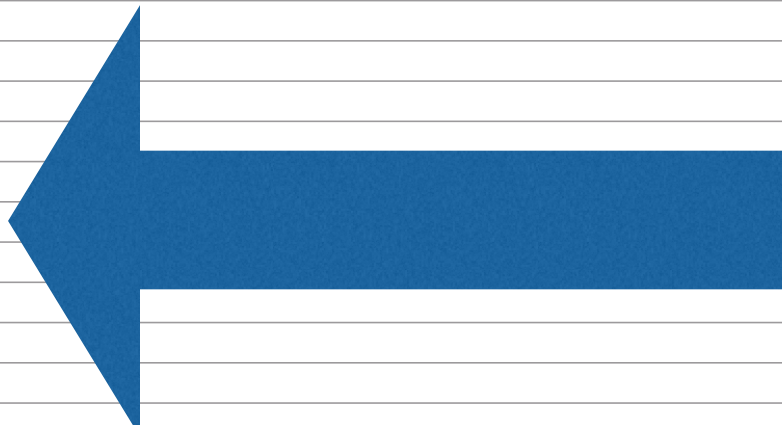
User Name:

Password:

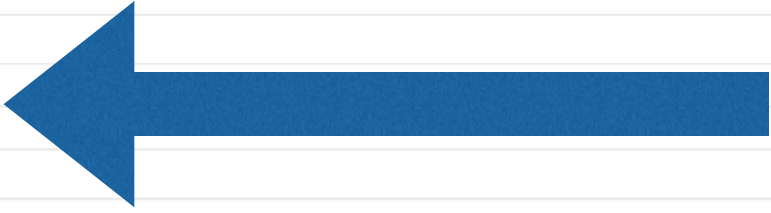
Remember this password with LastPass.com

OK Cancel

highGuestMemSupported	boolean	true
interVMCommunicationThroughVMCISupported	boolean	false
ipmiSupported	boolean	true
iscsiSupported	boolean	true
latencySensitivitySupported	boolean	true
localSwapDatastoreSupported	boolean	true
loginBySSLThumbprintSupported	boolean	true
maintenanceModeSupported	boolean	true
maxHostRunningVms	int	256
maxHostSupportedVcpus	int	256
maxRegisteredVMs	int	1024
maxRunningVMs	int	0
maxSupportedVMs	int	Unset
maxSupportedVcpus	int	Unset
multipleNetworkStackInstanceSupported	boolean	true
nestedHVSsupported	boolean	true
nfsSupported	boolean	true
nicTeamingSupported	boolean	true
perVMNetworkTrafficShapingSupported	boolean	false
perVmSwapFiles	boolean	true
preAssignedPCIUnitNumbersSupported	boolean	true
rebootSupported	boolean	true
recordReplaySupported	boolean	true
recursiveResourcePoolsSupported	boolean	true
reliableMemoryAware	boolean	true
replayCompatibilityIssues	string[]	Unset
replayUnsupportedReason	string	Unset
restrictedSnapshotRelocateSupported	boolean	true
sanSupported	boolean	true
scaledScreenshotSupported	boolean	true
scheduledHardwareUpgradeSupported	boolean	true



CPU	6	
Cores per Socket	1	Sockets: 6
CPU Hot Plug	<input type="checkbox"/> Enable CPU Hot Add	
Reservation	0	MHz
Limit	Unlimited	MHz
Shares	Normal	6000
CPUID Mask	Expose the NXXD flag to guest	Advanced...
Hardware virtualization	<input checked="" type="checkbox"/> Expose hardware assisted virtualization to the guest OS	
Performance counters	<input checked="" type="checkbox"/> Enable virtualized CPU performance counters	
HT Sharing	Any	
CPU/MMU Virtualization	Automatic	
<p>ESXi can automatically determine if a virtual machine should use hardware support for virtualization based on the processor type and the virtual machine. However, for some workloads, overriding the automatic selection can provide better performance.</p> <p>Note: If a selected setting is not supported by the host or conflicts with existing virtual machine settings, the setting is ignored and the "Automatic" selection is used.</p>		
Memory	16384	MB
Hard disk 1	12	GB
Hard disk 2	100	GB
Hard disk 3	500	GB
SCSI controller 0	LSI Logic Parallel	
SCSI controller 1	LSI Logic SAS	
Network adapter 1	VLAN15-House-LAN (TB_Prod-d...)	<input checked="" type="checkbox"/> Connected
Status	<input checked="" type="checkbox"/> Connect At Power On	
Port ID	18	
Adapter Type	E1000	
MAC Address	00:50:56:b6:6a:de	Automatic
Network adapter 2	VLAN15-House-LAN (TB_Prod-d...)	<input checked="" type="checkbox"/> Connected
Network adapter 3	VLAN18-View-Guests (TB_Prod-...)	<input checked="" type="checkbox"/> Connected
Network adapter 4	VLAN18-View-Guests (TB_Prod-...)	<input checked="" type="checkbox"/> Connected
CD/DVD drive 1	Client Device	<input type="checkbox"/> Connected

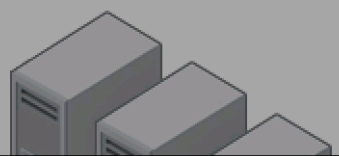


New device:

- Home
- vcntr.hq.intertrick.net
 - TB-Lab
 - vmervice-vshield-pg
 - TB_Prod-dvSwitch
 - TB_Prod-dvSwitch-DVU
 - VLAN1-Management
 - VLAN15-House-LAN
 - VLAN16-DMZ_dvPortGr
 - VLAN18-View-Guests**
 - VLAN200-Dev200
 - VLAN201-Dev201
 - VLAN5-F5-HA

What is a distributed port group?

A distributed port group is a port group associated with a distributed switch and specifies port configuration options for each member port. Distributed port groups define how a connection is made through the



VLAN18-View-Guests - Edit Settings

General

Promiscuous mode:

Advanced

MAC address changes:

Forged transmits:

Security

Traffic shaping

VLAN

Teaming and failover

Monitoring

Traffic filtering and marking

Miscellaneous

OK Cancel

VMware Tools!

Knowledge Base

KB Home

Knowledge Base Help

The VMware Knowledge Base provides support solutions, error messages and troubleshooting guides

Search the VMware Knowledge Base (KB)

View by Article ID

Search

View

Products -->

Overview of VMware Tools (340)



513 Ratings

Details

This article:

- includes an overview of VMware Tools.
- lists the product documentation that contains instructions for installing VMware Tools.
- provides additional links to VMware Tools installation instructions and troubleshooting information.

For information on VMware Fusion, see [Overview of VMware Tools for VMware Fusion \(1022048\)](#).

For information on installing Tools in vSphere 5.x, see [Installing VMware Tools in vSphere \(2004754\)](#).

Solution

This article contains 3 sections:

- [Overview of VMware Tools](#)
- [Installation Instructions](#)
- [Additional Information](#)

Overview of VMware Tools

VMware Tools is a suite of utilities that enhances the performance of the virtual machine's guest operating system and improves management of

Actions

- [Bookmark Document](#)
- [Print Document](#)
- [Subscribe to Document](#)

SHARE ...

KB: 340

Updated: **Aug 25, 2014**

Categories:

Informational

Languages:

English

Product(s):

VMware ACE

VMware ESX

VMware ESXi

VMware GSX Server

Flings

Apps and tools built by our engineers that are intended to be played with and explored.

[All Flings](#)
[android](#)
[Auto Deploy](#)
[Batch](#)
[Big data](#)
[cluster](#)
[Data Center](#)
[desktop pools](#)

All Flings

[Newest](#)
[Popular](#)
[Title](#)


VM Resource and Availability Service

This Fling enables you to perform a what-if analysis for host failures on your infrastructure.



vMaxGuide

vMaxGuide is an Android application that provides a comparative view of components across three versions of



ViewDbChk

The ViewDbChk tool allows administrators to scan for, and fix provisioning errors that can not be



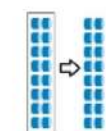
Container Orchestration on vSphere

This Fling lets you deploy Big Data Extensions on vSphere Standard Edition for the purpose of



Horizon Toolbox (was View Auditing)

The Horizon Toolbox is a new web portal that serves as an extension to Horizon View Administrator.



Storage Profiles Updater

This Fling is a simple tool that enables the migration of vCloud Director virtual machines and templates from



VMware OS Optimization Tool

The VMware OS Optimization Tool



Horizon Migration Tool

The Horizon Migration Tool helps you

Flings

Agree & Download

I have read and agree to the [Technical Preview Agreement](#). I also understand that Flings are experimental and should not be run on production systems.

Search Flings

Search

[All Flings](#)

[android](#)

[Auto Deploy](#)

[Batch](#)

[Big data](#)

[cluster](#)

[Data Center](#)

[desktop pools](#)

VMware Tools for Nested ESXi

 Like 7  Tweet 0  +1 9

Version: 1.1 • File Size: 1.8 MB • 4/1/2014 • Technical Preview License

Summary [System Requirements](#) [Instructions](#) [Engineers](#) [Comments \(51\)](#)

Summary

Note: See Instructions tab for downloads.

This [VIB package](#) provides a VMware Tools service (vmtoolsd) for running inside a nested ESXi virtual machine. The following capabilities are exposed through VMware Tools:

- Provides guest OS information of the nested ESXi Hypervisor (eg. IP address, configured hostname, etc.).
- Allows the nested ESXi VM to be cleanly shut down or restarted when performing power operations with the vSphere Web/C# Client or vSphere APIs.
- Executes scripts that help automate ESXi guest OS operations when the guest's power state changes.
- Supports the Guest Operations API (formally known as the VIX API).

New in version 1.1:

– Now reports IPv6 addresses as well as IPv4 addresses for nested ESXi guests.

For more information:

- [What's in a VIB?](#)
- [woot! VMware Tools for Nested ESXi](#)

VMware Tools!

SSH Into the ESXi host and run the following:

```
esxcli network firewall ruleset set -e true -r httpClient
```

```
esxcli software vib install -v http://download3.vmware.com/software/vmw-tools/esxi\_tools\_for\_guests/esx-tools-for-esxi-9.7.1-0.0.000000.i386.vib -f
```

View_CPA-S2_ESXi1

- Summary
- Resource Allocation
- Performance
- Tasks & Events
- Alarms
- Console
- Permissions
- Maps
- Storage Views
- Update Manager
- vShield

General

Guest OS: VMware ESXi 5.x
VM Version: vmx-10
CPU: 6 vCPU
Memory: 16384 MB
Memory Overhead: 208.61 MB

VMware Tools: ✔ Running (Current)
IP Addresses: 192.168.15.29

DNS Name: view-cpa-s2-esxi-1.hq.intertrick.net
EVC Mode: N/A

State: Powered On
Host: esxi2.hq.intertrick.net

Active Tasks:

vSphere HA Protection: ✔ Protected

Resources

Consumed Host CPU: **143 MHz**
Consumed Host Memory: **1635.00 MB**
Active Guest Memory: **0.00 MB**
[Refresh Storage Usage](#)

Provisioned Storage: **628.11 GB**

Commands

- Shut Down Guest
- Suspend
- Restart Guest
- Edit Settings
- Open Console
- Migrate
- Clone to New Virtual Machine

Annotations

Notes:

View_CPA-S2_ESXi1 on esxi2.hq.intertrick.net

File View VM

```
VMware ESXi 5.5.0 (VMKernel Release Build 2302651)

VMware, Inc. VMware Virtual Platform

6 x Intel(R) Xeon(R) CPU E5620 @ 2.40GHz
16 GiB Memory
```

Download tools to manage this host from:
<http://view-cpa-s2-esxi-1/>
<http://192.168.15.29/> (STATIC)
[http://\[fe80::250:56ff:feb6:6ade1\]/](http://[fe80::250:56ff:feb6:6ade1]/) (STATIC)

<F2> Customize System/View Logs <F12> Shut Down/Restart

ESXi Host Hardware



SUPERMICR[®]

Virtual Media Record Macro Options User List Capture Exit

VMware ESXi 5.5.0 [Releasebuild-1331820 x86_64]

#PF Exception 14 in world 36019:vmm2:Storage IP 0x41802f210c57 addr 0x0

PTEs:0x0:

cr0=0x80050031 cr2=0x0 cr3=0x156e65000 cr4=0x2668

frame=0x4123b2cdd020 ip=0x41802f210c57 err=9 rflags=0x10212

rax=0x0 rbx=0xe5 rcx=0x2

rdx=0x2 rbp=0x4123b2cdd4c8 rsi=0x0

rdi=0x410867b45a40 r8=0x1 r9=0x1

r10=0x41110c9d1080 r11=0x4 r12=0x41000869cef4

r13=0x1 r14=0x4123b2cdd3d8 r15=0x4123b2cdd42c

*PCPU2:36019/vmm2:Storage2

PCPU 0: VVVVVVVV

Code start: 0x41802f000000 VMK uptime: 0:00:12:04.496

0x4123b2cdd4c8: [0x41802f210c57]E1000PollRxRing@vmkernel#nover+0xb73 stack: 0x1

0x4123b2cdd538: [0x41802f213bb5]E1000DevRx@vmkernel#nover+0x3a9 stack: 0x4123b2cdd578

0x4123b2cdd5d8: [0x41802f192164]IOChain_Resume@vmkernel#nover+0x174 stack: 0x4305d

0x4123b2cdd628: [0x41802f179e22]PortOutput@vmkernel#nover+0x136 stack: 0x41087938e780

0x4123b2cdd688: [0x41802f726f58]EtherswitchForwardLeafPortsQuick@<None>#<None>+0x4c stack: 0x4123b2c

0x4123b2cdd8a8: [0x41802f727f51]EtherswitchPortDispatch@<None>#<None>+0xe25 stack: 0x412300000014

0x4123b2cdd918: [0x41802f17a7d2]Port_InputResume@vmkernel#nover+0x192 stack: 0x0

0x4123b2cdd968: [0x41802f17ba39]Port_Input_Committed@vmkernel#nover+0x25 stack: 0x2bcab735

0x4123b2cdd9f8: [0x41802f1cad25]Vmxnet3VMKDevTQDoTx@vmkernel#nover+0x28d stack: 0x0

0x4123b2cdda68: [0x41802f1cec13]Vmxnet3VMKDev_AsyncTx@vmkernel#nover+0xa3 stack: 0x4123b2cddbe8

0x4123b2cddad8: [0x41802f1add70]NetWorldletPerVMCB@vmkernel#nover+0x218 stack: 0x0

0x4123b2cddc38: [0x41802f0eae77]WorldletProcessQueue@vmkernel#nover+0xcf stack: 0x4123b2cddc78

0x4123b2cddc78: [0x41802f0eb93c]WorldletBHHandler@vmkernel#nover+0x54 stack: 0x1ab2bcd8a1a

0x4123b2cddce8: [0x41802f02e5b9]BH_Check@vmkernel#nover+0xc9 stack: 0x410851630200

0x4123b2cddd58: [0x41802f24e72d]CpuSchedIdleLoopInt@vmkernel#nover+0x391 stack: 0x412300000002

0x4123b2cdddeb8: [0x41802f254930]CpuSchedDispatch@vmkernel#nover+0x1630 stack: 0x411116ae04c0

0x4123b2cddf28: [0x41802f255c65]CpuSchedWait@vmkernel#nover+0x245 stack: 0xffffffff00000001

0x4123b2cddf98: [0x41802f2561cb]CpuSched_VcpuHalt@vmkernel#nover+0x197 stack: 0x418000000000

0x4123b2cddfef8: [0x41802f0cde30]VMMVMKCall_Call@vmkernel#nover+0x48c stack: 0x0

0x41802f0cd484: [0xfffffffffc223baa]_vmk_versionInfo_str@<None>#<None>+0xcc3a578a stack: 0x0

base fs=0x0 gs=0x418040800000 Kgs=0x0

Coredump to disk. Slot 1 of 1.

Finalized dump header (12/12) DiskDump: Successful.

Debugger waiting(world 36019) -- no port for remote debugger. "Escape" for local debugger.

VMware Compatibility Guide

Search Compatibility Guide: All Listings

Looking for a simplified search? [Use the Guided Search Wizard](#)

What are you looking for: **Systems / Servers** Compatibility Guides Help **Current Results: 12**

<p>Product Release Version:</p> <ul style="list-style-type: none"> All ESXi 5.5 U2 ESXi 5.5 U1 ESXi 5.5 ESXi 5.1 U3 ESXi 5.1 U2 	<p>System Type:</p> <ul style="list-style-type: none"> All Blade Mother Board Rack or Tower Rackmount Tower 	<p>Additional Criteria: (Collapse All)</p>	
<p>Partner Name:</p> <ul style="list-style-type: none"> All A10 Networks Aberdeen LLC Ace Computers Acer Inc. ACMA Computers Action Adlink technology inc. Advantech Corporation Alcatel-Lucent AMAX Information Technologies AMD (Advanced Micro Devices, Inc.) 	<p>Features:</p> <ul style="list-style-type: none"> All Fault Tolerant(FT) SR-IOV Trusted Execution Technology(TXT) Virtual Dedicated Graphics Acceleration (vD) VM Direct Path IO VM DirectPath IO for General Purpose GPU 	<p>Min Certified Memory:</p> <p>All</p>	<p>Max Certified Memory:</p> <p>All</p>
<p>Keyword:</p> <input type="text"/>		<p>Sockets:</p> <p>All</p>	<p>Enhanced vMotion Capability Modes:</p> <ul style="list-style-type: none"> All AMD Opteron™ Generation 1 AMD Opteron™ Generation 2 AMD Opteron™ Generation 3 AMD Opteron™ Generation 3 without 3DNow AMD Opteron™ Generation 4
		<p>Max Cores per Socket:</p> <p>All</p>	<p>Fault Tolerant Compatible Sets:</p> <ul style="list-style-type: none"> All AMD Bulldozer Generation AMD Opteron™ Generation 3 AMD Piledriver Generation Haswell Intel® Haswell Generation Intel® Ivy-Bridge Generation Intel® Nehalem Generation Intel® Penryn Generation
		<p>CPU Series:</p> <ul style="list-style-type: none"> Intel Xeon 73xx Series Intel Xeon 74xx Series Intel Xeon 75xx Series Intel Xeon Dual Core (Sossaman) Series Intel Xeon E3-1100 Series Intel Xeon E3-1100-C-v2 Series Intel Xeon E3-1200 Series 	
		<p>Posted Date Range:</p> <p>All</p>	

“Good” Host Hardware*

- VMware HCL!
- Capable of supporting at least 32GB of RAM
- PCI-E Slots (I suggest 4)
- Low Power Consumption
- Quiet



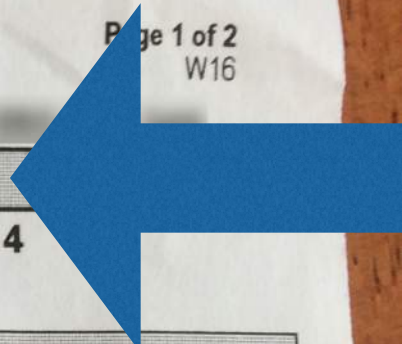
Bill Based On: Actual Meter Reading, Prorated
Bill

Billing Period: May 21 to Jun 20, 2014 for 31 days
Bill For: THOMAS A BREAKIRON

June 24, 2014
Account Number:

Amount Due: \$329.55

Due Date: July 14, 2014



To report an emergency or an outage, call 24 hours a day 1-888-544-4877. For Customer Service, call 1-800-686-0021. For Payment Options, call 1-800-736-3404. Pay your bill online at www.firstenergycorp.com

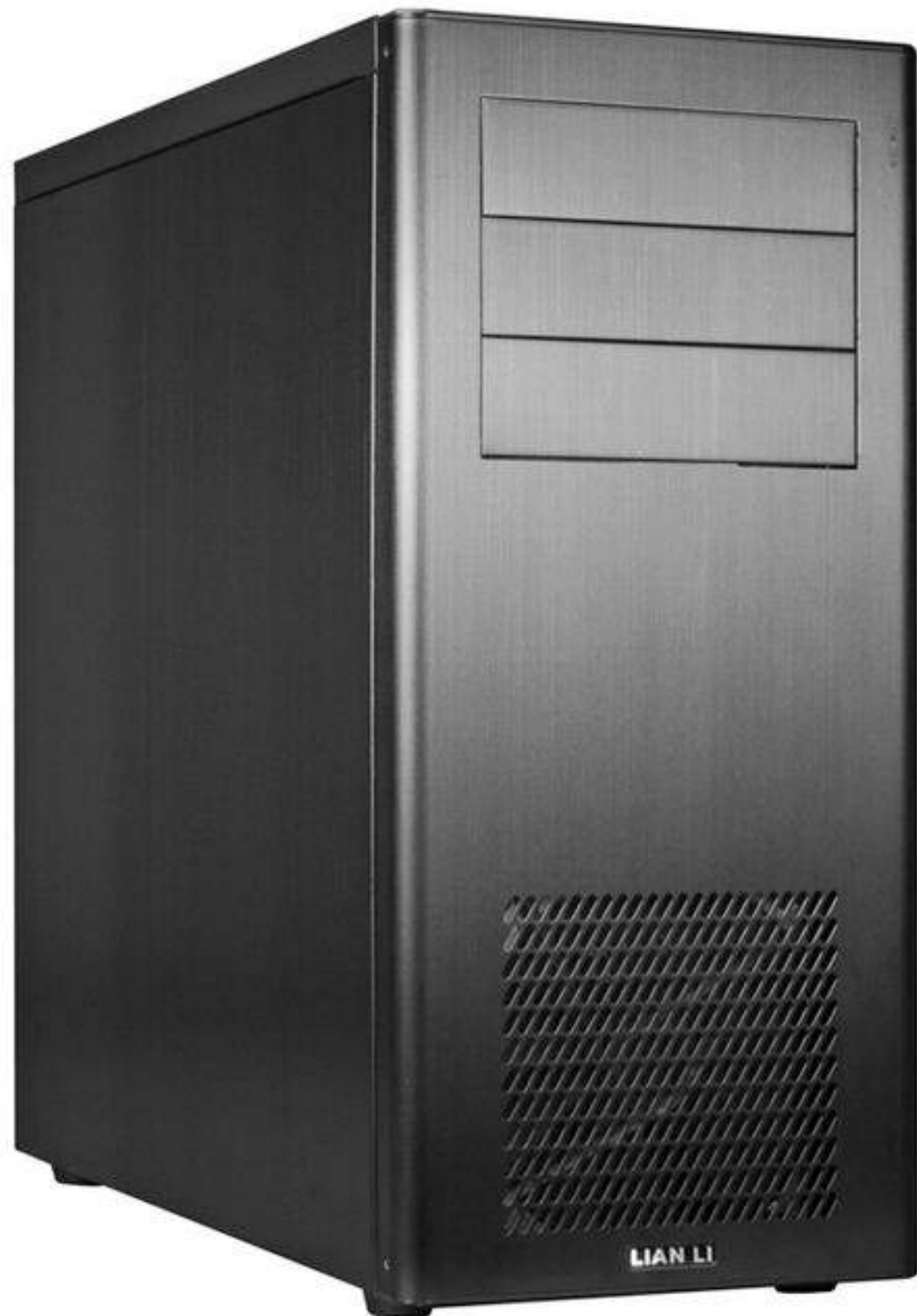
Bill issued by: West Penn Power, PO Box 3615, Akron OH 44309-3615

Messages	Account Summary	Amount Due
To avoid a 1.25% Late Payment Charge being added to your bill, please pay the Amount Due by the Due Date.	Previous Balance	83.14
Your current PRICE TO COMPARE for generation and transmission from West Penn Power is listed below. For you to save, a supplier's price must be lower.	Payments/Adjustments	-83.14
Domestic Service - [REDACTED] - 6.57 cents per KWH	Balance at Billing on Jun 24, 2014	0.00
Customer reserves the right to shop for an electric supplier.	West Penn Power - Consumption	329.55
Your next meter reading will be estimated. See the back of the bill to provide a customer reading by Jul 21, 2014.	Amount Due by Jul 14, 2014	\$329.55
Your bill includes \$24.52 in PA taxes, of which \$19.44 is PA gross receipts tax.	Usage Information for Meter Number [REDACTED]	
This bill, based on an actual reading, exceeds your normal estimated bill by at least 50% or \$50, whichever is greater. This is the result of four or more consecutive estimates. Arrangements can be made to extend the time for payment, if desired. For further explanation, contact the office shown above.	Jun 20, 2014 KWH Reading (Actual)	77,519
Generation prices and charges are set by the electric generation supplier you have chosen. The Public Utilities Commission regulates distribution prices and services. The Federal Energy Regulatory Commission regulates transmission prices and services.	May 21, 2014 KWH Reading (Estimate)	73,871
Effective June 1, 2014, the Energy Efficiency Charges which recover costs associated with the utility's programs to reduce annual electric use and peak demand for electricity as mandated by the state has	KWH used	3,648
	Charges From West Penn Power	
	Customer Number: [REDACTED]	
	Rate: Domestic Service	
	Price to Compare Default Service	2,354 KWH x 0.075140 176.88
		1,294 KWH x 0.049610 64.20
	Customer Distribution Charge	5.00
	Distribution Charge	3,648 KWH x 0.019718 71.93
	Default Service Support Charge	1,294 KWH x 0.000900 1.16
		2,354 KWH x 0.000530 1.25
	Smart Meter Charge	3,648 KWH x 0.003030 11.05
	State Tax Surcharge	-1.92
	Current Consumption Bill Charges	329.55
	Detail Payment and Adjustment Information	
	06/03/14 Payment	-83.14



The Mac Mini

- 2012 Mac Mini
 - **Prices start above \$300 with 4GB of RAM**
 - 2012 Mini will max out at 16GB of RAM
 - They seem to work with reasonable stability (or so I am told)
 - Can legally run Mac OS VMs
 - **Uses very little power**
 - **Very quiet**
 - Not on HCL
- Current Mac Mini
 - Not upgradeable at all
 - Max of 8GB of RAM
 - Not on HCL



Product Release Version:

- All
- ESXi 5.5 U2
- ESXi 5.5 U1
- ESXi 5.5
- ESXi 5.1 U3
- ESXi 5.1 U2

System Type:

- All
- Blade
- Mother Board
- Rack or Tower
- Rackmount
- Tower

Partner Name:

- All
- A10 Networks
- Aberdeen LLC
- Ace Computers
- Acer Inc.
- ACMA Computers
- Action
- Adlink technology inc.
- Advantech Corporation
- Alcatel-Lucent
- AMAX Information Technologies
- AMD (Advanced Micro Devices, Inc.)

Features:

- All
- Fault Tolerant(FT)
- SR-IOV
- Trusted Execution Technology(TXT)
- Virtual Dedicated Graphics Acceleration (vD)
- VM Direct Path IO
- VM DirectPath IO for General Purpose GPU'

Keyword:

Additional Criteria: [\(Collapse All\)](#)

Min Certified Memory:

Max Certified Memory:

Sockets:

Enhanced vMotion Capability Modes:

- All
- AMD Opteron™ Generation 1
- AMD Opteron™ Generation 2
- AMD Opteron™ Generation 3
- AMD Opteron™ Generation 3 without 3DNow
- AMD Opteron™ Generation 4

Max Cores per Socket:

CPU Series:

- Intel Xeon E3-1200 Series
- Intel Xeon E3-1200-v2 Series
- Intel Xeon E3-1200-v3 Series
- Intel Xeon E5-1400-v2 Series
- Intel Xeon E5-1600-v2 Series
- Intel Xeon E5-2400 Series
- Intel Xeon E5-2400-v2 Series

Fault Tolerant Compatible Sets:

- All
- AMD Bulldozer Generation
- AMD Opteron™ Generation 3
- AMD Piledriver Generation
- Haswell
- Intel® Haswell Generation
- Intel® Ivy-Bridge Generation
- Intel® Nehalem Generation
- Intel® Penryn Generation

Posted Date Range:

Update and View Results

Reset

[Click here to Read Important Support Information.](#)

Server Device and Model Information

The detailed lists show actual vendor devices that are either physically tested or are similar to the devices tested by VMware or VMware partners.

VMware provides support only for the devices that are listed in this document

Click on the 'Model' to view more details and to subscribe to RSS feeds.

[Bookmark](#) | [Print](#) | [Export to CSV](#)

Search Results: Your search for " Systems / Servers " returned **one result.** [Back to Top](#) [Turn Off Auto Scroll](#)

Display: **10**

Partner Name	Model	CPU Series	Supported Releases
RadiSys	COM Express CEQM87	Intel i7-4700-EQ Series	ESXi 5.5 U2 5.5 U1

Click here to **Read Important Support Information**.

Server Device and Model Information

The detailed lists show actual vendor devices that are either physically tested or are similar to the devices tested by VMware or VMware partners. VMware provides support only for the devices that are listed in this document

Click on the 'Model' to view more details and to subscribe to RSS feeds.

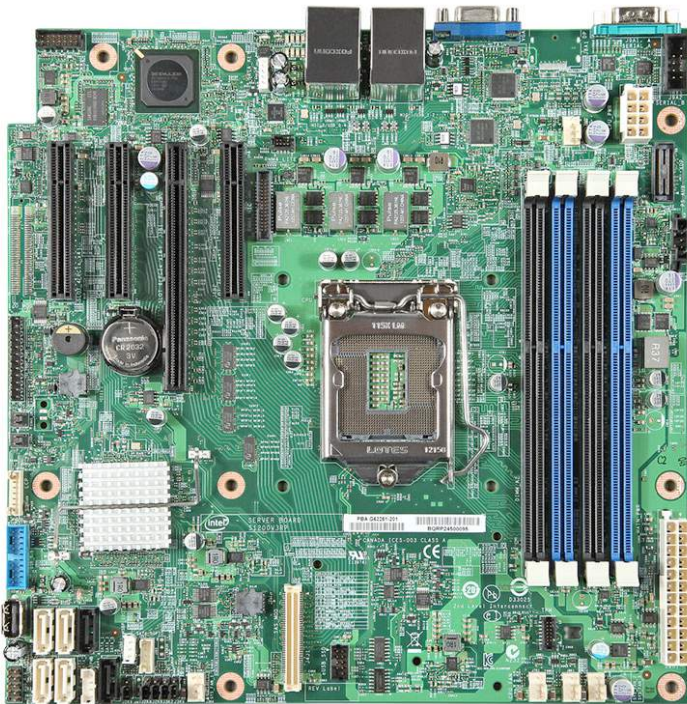
[Bookmark](#) | [Print](#) | [Export to CSV](#)

Search Results: Your search for " Systems / Servers " returned **11 results**. [Back to Top](#) [Turn Off Auto Scroll](#)

Display: 

Partner Name	Model	CPU Series	Supported Releases
Acer Inc.	Altos R320 F3	Intel Xeon E3-1200-v3 Series	ESXi  5.5 U2 5.5 U1 5.5 5.1 U3
Action	ACTINA SOLAR 100 X6	Intel Xeon E3-1200-v3 Series	ESXi  5.5 U2 5.5 U1 5.5 5.1 U3
Advantech Corporation	ASMB-584	Intel Xeon E3-1200-v3 Series	ESXi 5.5 U2
Advantech Corporation	ASMB-782	Intel Xeon E3-1200-v2 Series	ESXi 5.5 U2
Advantech Corporation	ASMB-784	Intel Xeon E3-1200-v3 Series	ESXi 5.5 U2
AMAX Information Technologies	X-11305	Intel Xeon E3-1200-v3 Series	ESXi  5.5 U2 5.5 U1 5.5 5.1 U3
Intel	S1200V3RPL	Intel Xeon E3-1200-v3 Series	ESXi  5.5 U2 5.5 U1 5.5 5.1 U3
Maguay	QuickServer RP	Intel Xeon E3-1200-v3 Series	ESXi  5.5 U2 5.5 U1 5.5 5.1 U3
Quanmax AG	Maxdata Platinum 100 I M11	Intel Xeon E3-1200-v3 Series	ESXi  5.5 U2 5.5 U1 5.5 5.1 U3
Quanmax AG	Maxdata Platinum 200 I M11	Intel Xeon E3-1200-v3 Series	ESXi  5.5 U2 5.5 U1 5.5 5.1 U3
Tyan Computer	S5532	Intel Xeon E3-1200-v3 Series	ESXi 5.5 U2 5.5 U1

Intel S1200V3RPL



Hardware Pricing: ([amazon.com](https://www.amazon.com))

- \$225 - Motherboard
- \$250 - QC 3.1Ghz E3 Xeon CPU
- \$400 - 32GB (8x4) RAM
- \$30 - Case
- \$45 - Low end Antec 400W PS

Total: \$860



Dell R710



HP DL380 G6



Enterprise Hosts

HP DL380 G6

- 2U Rack Mount
- Xeon 5500/5600 CPUs
- 12X DIMM Slots (192GB)
- 4x PCI-E Slots
 - Optional 16x Slot
- HP iLO
- vSphere HCL

Dell R710

- 2U Rack Mount
- Xeon 5500/5600 CPUs
- **18X** DIMM Slots (288GB)
- 4x PCI-E Slots
 - Optional 16x Slot
- Dell iDRAC6
- vSphere HCL

DELL POWEREDGE R710 DUAL 2.4 QC 32GB (8X4GB) PERC 6I RPS IDRAC SFF



Mouse over image to zoom

Item condition: **Seller refurbished**

"MACHINE IS USED. MINIMAL WEAR UPDATED BIO's TESTED AND CLEANED"

Ended: Nov 11, 2014, 10:38PM

Quantity: 0 available / 2 sold

Price: **US \$435.00**

Bucks Join **eBay Bucks** and earn % back on this item. [See conditions](#)

Shipping: **\$35.00** Standard Shipping | [See details](#)

Item location: **United States**

Ships to: **United States** [See exclusions](#)

Delivery: **Estimated within 6 business days**

Payments: **PayPal**    

Credit Cards processed by PayPal

[See details](#)

Returns: **30 days money back, buyer pays return shipping** | [See details](#)

Guarantee: **ebay** MONEY BACK GUARANTEE | [See details](#)

Get the item you ordered or get your money back.
Covers your purchase price and original shipping.

Seller information

it-gear (2655 ★) **me**

99.8% Positive feedback

[+ Follow this seller](#)

Visit store: [it-gear](#)

[See other items](#)

\$ Have one to sell? [Sell now](#)

Description

Shipping and payments

[Print](#) | [Report](#)

eBay item number: 20121258898

Seller assumes all responsibility for this listing.

Item specifics

Condition: **Seller refurbished** : ?

Seller Notes: **"MACHINE IS USED. MINIMAL WEAR UPDATED BIO's TESTED AND CLEANED"**

Product Line: **PowerEdge**

it-gear

Visit my eBay store 

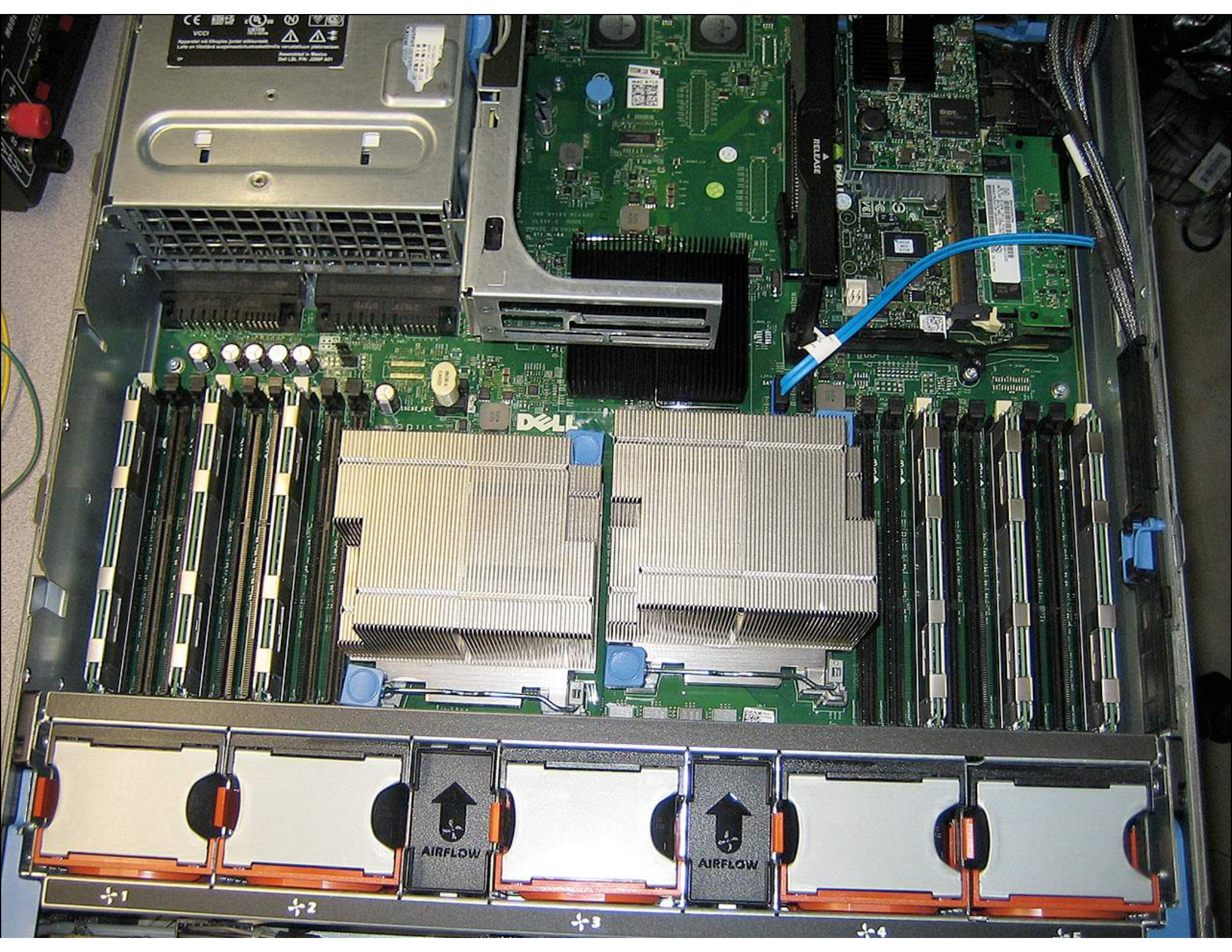


[Sign up for newsletter](#)

[Search Store](#)







VCCI
Appareil est classé dans la classe A.
Léger ou modéré empoussiérement.
Assurez-vous de respecter les précautions.
Assurez-vous de respecter les précautions.
Dell LBL PWR 2009 401

DELL

AIRFLOW

AIRFLOW

+1

+2

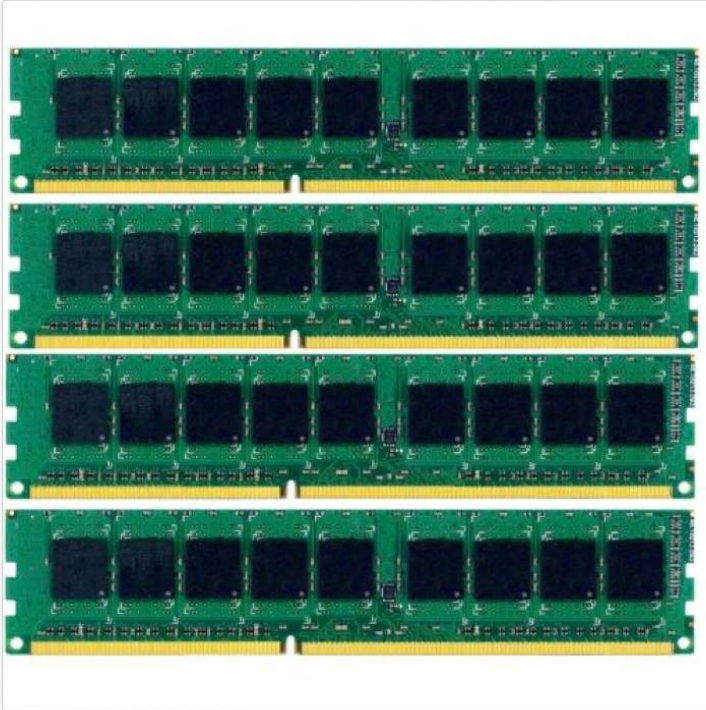
+3

+4

+5

You have purchased more than one of these items. | View purchase history

The listing below has been updated by the seller. You can see the items you purchased from the Purchase history.



Mouse over image to zoom

Have one to sell? Sell now

NOT FOR PC/MAC! 16GB (4x4GB) PC3-10600 ECC REGISTERED for Dell PowerEdge R710

Item condition: **Used**
"NOT FOR PERSONAL HOME COMPUTER/APPLE!"

Quantity: More than 10 available / 188 sold

Price: **US \$77.60**

Buy another

Add to cart

31 watching

Add to watch list

Add to collection

Free shipping

30-day returns

Experienced seller

Shipping: **FREE** Standard Shipping | See details

Item location: United States

Ships to: Worldwide | See exclusions

Delivery: Estimated between **Mon. Feb. 9** and **Fri. Feb. 13**

Payments: **PayPal** VISA MasterCard American Express Discover

Credit Cards processed by PayPal

See details

Returns: 30 days money back, buyer pays return shipping | See details

Guarantee: **ebay** MONEY BACK GUARANTEE | See details

Get the item you ordered or get your money back.

Covers your purchase price and original shipping.

Add to watch list

Seller information

server-ram (40976) me

99.3% Positive feedback

Follow this seller

Visit store: Wholesale Components

See other items

Free Overnight Shipping

Best Deal on Sweet Tablets
Starting at only **\$1999**

Browse Deals

New 2-yr activation req'd.

People who viewed this item also viewed

Feedback on our suggestion

NOT FOR PC/MAC! 8GB (2x4GB) PC3-10600...

\$39.58

Buy It Now
Free shipping

NOT FOR PC/MAC! 4GB Module PC3-10600...

\$22.99

Buy It Now
Free shipping

NOT FOR PC/MAC! 16GB (4x4GB)...

\$77.60

Buy It Now
Free shipping

NOT FOR PC/MAC! 16GB (4x4GB)...

\$77.60

Buy It Now
Free shipping

NOT FOR PC/MAC! 16GB 4X4GB Dell...

\$75.90

Buy It Now
Free shipping

NOT FOR PC/MAC! 2X4GB PC3-10600...

\$39.80

Buy It Now
Free shipping

Description Shipping and payments

Print | Report item

System
PowerEdge R710
admin, Admin

System

- iDRAC Settings
- Batteries
- Fans
- Intrusion
- Power Supplies
- Removable Flash Media
- Temperatures
- Voltages
- Power Monitoring
- LCD

Properties Set

System Summary

System Summary

Server Health

Status	Component
✓	Batteries
✓	Fans
✓	Intrusion
✓	Power Supplies
✓	Removable Flash Media
✓	Temperatures
✓	Voltages

Server Information

- Power State
- System Model
- System Revision
- System Host Name
- Operating System
- Operating System Version
- Service Tag
- Express Service
- BIOS Version
- Firmware Version
- IP Address(es)
- iDRAC MAC Address
- Lifecycle Controller

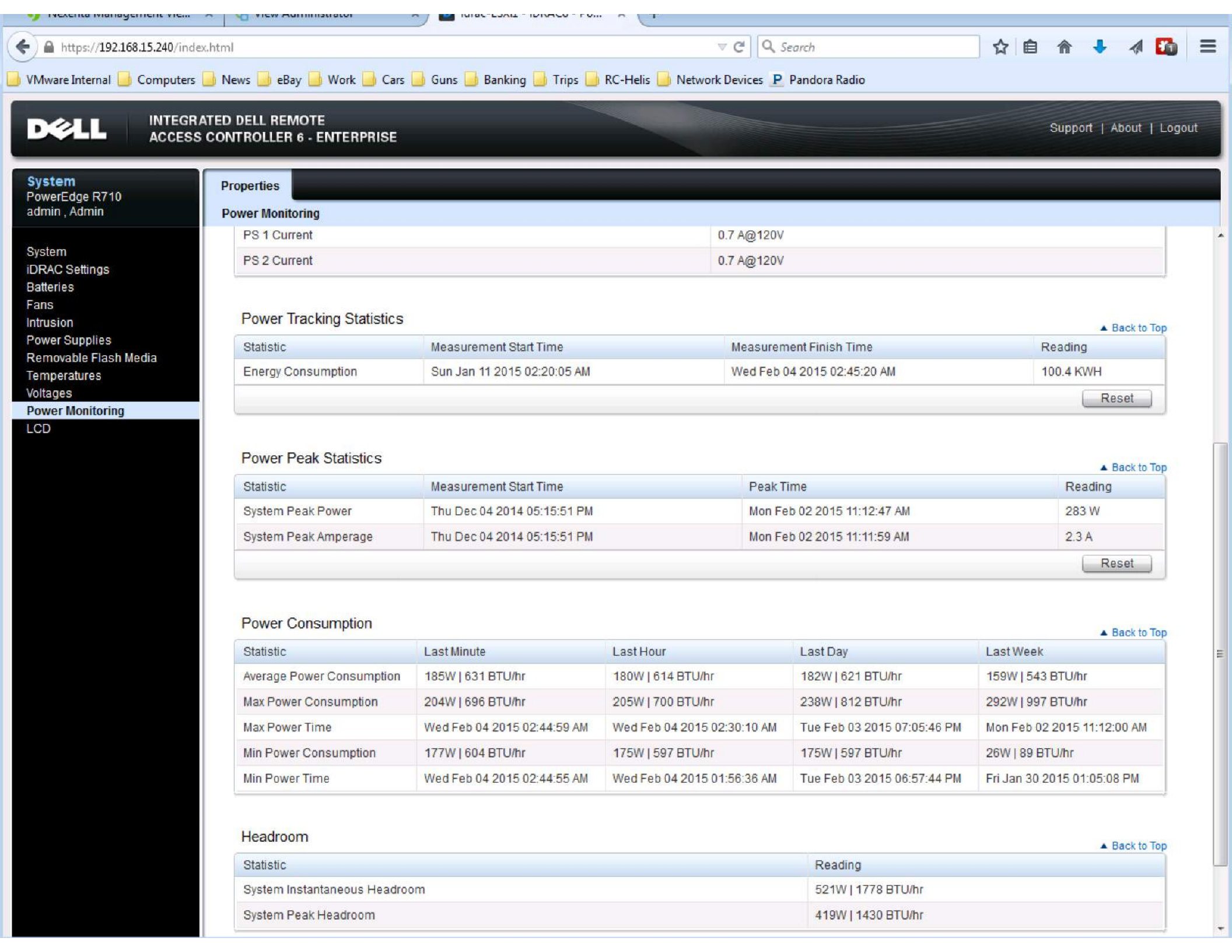
idrac-ESXi1, PowerEdge R710, User:admin, 44.2 fps

Virtual Media File View Macros Tools Power Help

```
VMware ESXi 5.5.0 (VMKernel Release Build 2302651)
Dell Inc. PowerEdge R710
2 x Intel(R) Xeon(R) CPU E5620 @ 2.40GHz
72 GiB Memory
```

Download tools to manage this host from:
<http://esxi1/>
<http://192.168.15.241/> (STATIC)
[http://\[fe80::7a2b:cbff:fe29:336f1\]/](http://[fe80::7a2b:cbff:fe29:336f1]/) (STATIC)

<F2> Customize System/View Logs
<F12> Shut Down/Restart



System

PowerEdge R710
admin , Admin

- System
- iDRAC Settings
- Batteries
- Fans
- Intrusion
- Power Supplies
- Removable Flash Media
- Temperatures
- Voltages

Power Monitoring

LCD

Properties

Power Monitoring

PS 1 Current	0.7 A@120V
PS 2 Current	0.7 A@120V

Power Tracking Statistics

[▲ Back to Top](#)

Statistic	Measurement Start Time	Measurement Finish Time	Reading
Energy Consumption	Sun Jan 11 2015 02:20:05 AM	Wed Feb 04 2015 02:45:20 AM	100.4 KWH

Power Peak Statistics

[▲ Back to Top](#)

Statistic	Measurement Start Time	Peak Time	Reading
System Peak Power	Thu Dec 04 2014 05:15:51 PM	Mon Feb 02 2015 11:12:47 AM	283 W
System Peak Amperage	Thu Dec 04 2014 05:15:51 PM	Mon Feb 02 2015 11:11:59 AM	2.3 A

Power Consumption

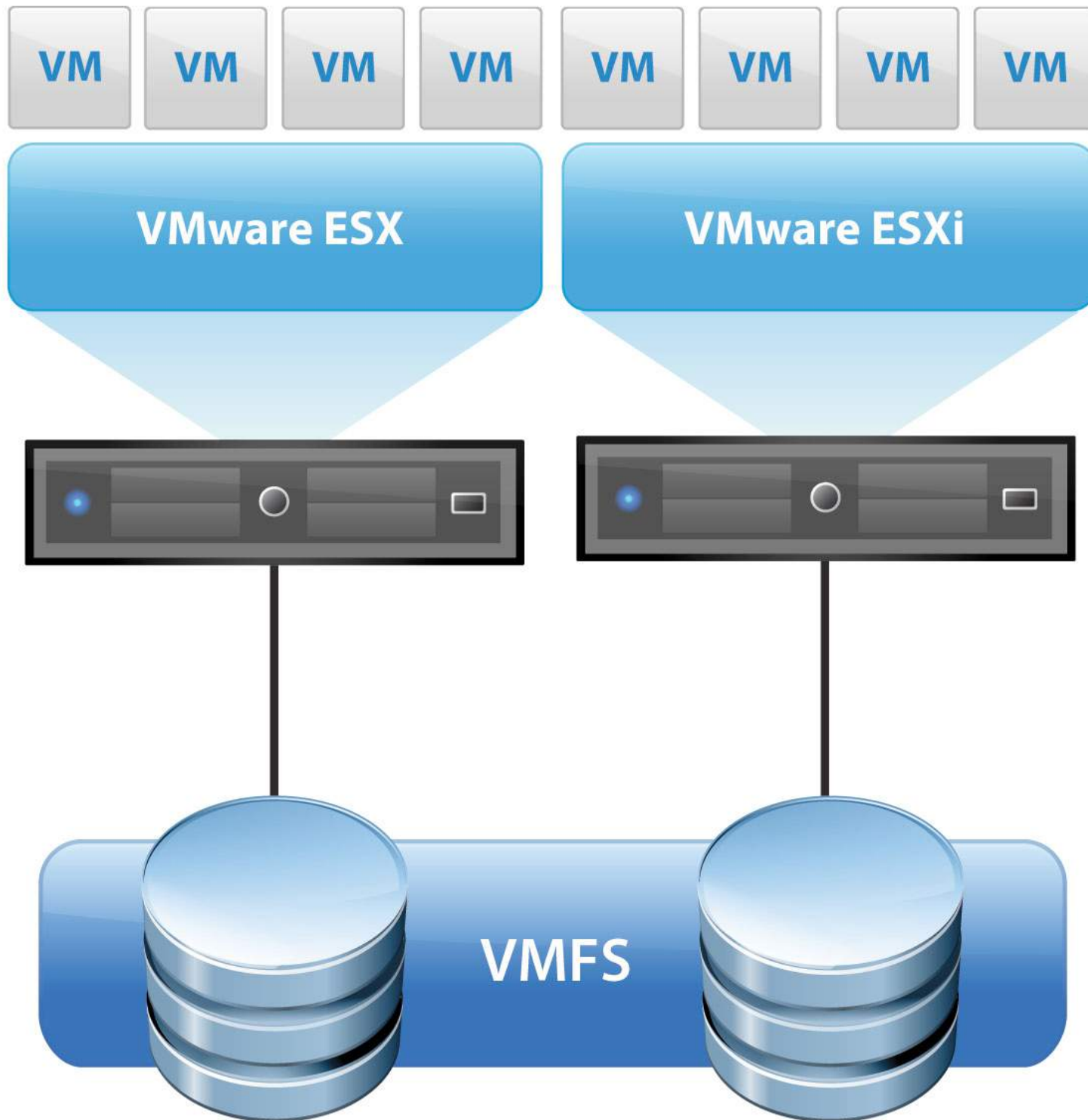
[▲ Back to Top](#)

Statistic	Last Minute	Last Hour	Last Day	Last Week
Average Power Consumption	185W 631 BTU/hr	180W 614 BTU/hr	182W 621 BTU/hr	159W 543 BTU/hr
Max Power Consumption	204W 696 BTU/hr	205W 700 BTU/hr	238W 812 BTU/hr	292W 997 BTU/hr
Max Power Time	Wed Feb 04 2015 02:44:59 AM	Wed Feb 04 2015 02:30:10 AM	Tue Feb 03 2015 07:05:46 PM	Mon Feb 02 2015 11:12:00 AM
Min Power Consumption	177W 604 BTU/hr	175W 597 BTU/hr	175W 597 BTU/hr	26W 89 BTU/hr
Min Power Time	Wed Feb 04 2015 02:44:55 AM	Wed Feb 04 2015 01:56:36 AM	Tue Feb 03 2015 06:57:44 PM	Fri Jan 30 2015 01:05:08 PM

Headroom

[▲ Back to Top](#)

Statistic	Reading
System Instantaneous Headroom	521W 1778 BTU/hr
System Peak Headroom	419W 1430 BTU/hr



Virtual Media Record Macro Options User List Capture Exit

```
VMware ESXi 5.5.0 [Releasebuild-1331820 x86_64]
#PF Exception 14 in world 36019:vmm2:Storage IP 0x41802f210c57 addr 0x0
PTEs:0x0;
cr0=0x80050031 cr2=0x0 cr3=0x156e65000 cr4=0x2668
frame=0x4123b2cdd020 ip=0x41802f210c57 err=9 rflags=0x10212
rax=0x0 rbx=0xe5 rcx=0x2
rdx=0x2 rbp=0x4123b2cdd4c8 rsi=0x0
rdi=0x410867b45a40 r8=0x1 r9=0x1
r10=0x41110c9d1080 r11=0x4 r12=0x41000869cef4
r13=0x1 r14=0x4123b2cdd3d8 r15=0x4123b2cdd42c
*PCPU2:36019/vmm2:Storage2
PCPU 0: VVVVVVVV
Code start: 0x41802f000000 VMK uptime: 0:00:12:04.496
0x4123b2cdd4c8: [0x41802f210c57]E1000PollRxRing@vmkernel#nover+0xb73 stack: 0x1
0x4123b2cdd538: [0x41802f213bb5]E1000DevRx@vmkernel#nover+0x3a9 stack: 0x4123b2cdd578
0x4123b2cdd5d8: [0x41802f192164]IOChain_Resume@vmkernel#nover+0x174 stack: 0x4305d
0x4123b2cdd628: [0x41802f179e22]PortOutput@vmkernel#nover+0x136 stack: 0x41087938e780
0x4123b2cdd688: [0x41802f726f58]EtherswitchForwardLeafPortsQuick@<None>#<None>+0x4c stack: 0x4123b2c
0x4123b2cdd8a8: [0x41802f727f51]EtherswitchPortDispatch@<None>#<None>+0xe25 stack: 0x412300000014
0x4123b2cdd918: [0x41802f17a7d2]Port_InputResume@vmkernel#nover+0x192 stack: 0x0
0x4123b2cdd968: [0x41802f17ba39]Port_Input_Committed@vmkernel#nover+0x25 stack: 0x2bcab735
0x4123b2cdd9f8: [0x41802f1cad25]Vmxnet3VMKDevTQDoTx@vmkernel#nover+0x28d stack: 0x0
0x4123b2cdda68: [0x41802f1cec13]Vmxnet3VMKDev_AsyncTx@vmkernel#nover+0xa3 stack: 0x4123b2cddbe8
0x4123b2cddad8: [0x41802f1add70]NetWorldletPerVMCB@vmkernel#nover+0x218 stack: 0x0
0x4123b2cddc38: [0x41802f0eae77]WorldletProcessQueue@vmkernel#nover+0xcf stack: 0x4123b2cddc78
0x4123b2cddc78: [0x41802f0eb93c]WorldletBHHandler@vmkernel#nover+0x54 stack: 0x1ab2bcd8a1a
0x4123b2cddce8: [0x41802f02e5b9]BH_Check@vmkernel#nover+0xc9 stack: 0x410851630200
0x4123b2cddd58: [0x41802f24e72d]CpuSchedIdleLoopInt@vmkernel#nover+0x391 stack: 0x412300000002
0x4123b2cddeb8: [0x41802f254930]CpuSchedDispatch@vmkernel#nover+0x1630 stack: 0x411116ae04c0
0x4123b2cddf28: [0x41802f255c65]CpuSchedWait@vmkernel#nover+0x245 stack: 0xffffffff00000001
0x4123b2cddf98: [0x41802f2561cb]CpuSched_VcpuHalt@vmkernel#nover+0x197 stack: 0x418000000000
0x4123b2cddfef8: [0x41802f0cde30]VMMVMKCall_Call@vmkernel#nover+0x48c stack: 0x0
0x41802f0cd484: [0xfffffffffc223baa]_vmk_versionInfo_str@<None>#<None>+0xcc3a578a stack: 0x0
base fs=0x0 gs=0x418040800000 Kgs=0x0
Coredump to disk. Slot 1 of 1.
Finalized dump header (12/12) DiskDump: Successful.
Debugger waiting(world 36019) -- no port for remote debugger. "Escape" for local debugger.
```

```
192.168.15.241 - PuTTY
value of 20231 microseconds to 430928 microseconds.
2015-01-29T01:18:18.215Z cpu0:32797)WARNING: ScsiDeviceIO: 1223: Device t10.94544500000000003160CF76E9DAD80719EEDFCF79274645 performance has deteriorated. I/O latency increased from average
value of 20231 microseconds to 965255 microseconds.
2015-01-29T01:18:18.312Z cpu6:32803)ScsiDeviceIO: 1203: Device t10.94544500000000003160CF76E9DAD80719EEDFCF79274645 performance has improved. I/O latency reduced from 965255 microseconds to
188672 microseconds.
2015-01-29T01:18:20.020Z cpu10:1017870)World: 14302: VC opID hostd-5dc0 maps to vmkernel opID bf22b343
2015-01-29T01:18:26.934Z cpu1:32798)ScsiDeviceIO: 1203: Device t10.94544500000000003160CF76E9DAD80719EEDFCF79274645 performance has improved. I/O latency reduced from 188672 microseconds to
40361 microseconds.
2015-01-29T01:18:35.872Z cpu5:32802)WARNING: ScsiDeviceIO: 1223: Device t10.94544500000000003160CF76E9DAD80719EEDFCF79274645 performance has deteriorated. I/O latency increased from average
value of 20237 microseconds to 411204 microseconds.
2015-01-29T01:18:35.876Z cpu12:32809)WARNING: ScsiDeviceIO: 1223: Device t10.94544500000000003160CF76E9DAD80719EEDFCF79274645 performance has deteriorated. I/O latency increased from average
value of 20237 microseconds to 866292 microseconds.
2015-01-29T01:18:35.885Z cpu0:32797)WARNING: ScsiDeviceIO: 1223: Device t10.94544500000000003160CF76E9DAD80719EEDFCF79274645 performance has deteriorated. I/O latency increased from average
value of 20239 microseconds to 1790295 microseconds.
2015-01-29T01:18:35.929Z cpu0:32797)ScsiDeviceIO: 1203: Device t10.94544500000000003160CF76E9DAD80719EEDFCF79274645 performance has improved. I/O latency reduced from 1790295 microseconds to
354137 microseconds.
2015-01-29T01:18:37.115Z cpu10:32807)ScsiDeviceIO: 1203: Device t10.94544500000000003160CF76E9DAD80719EEDFCF79274645 performance has improved. I/O latency reduced from 354137 microseconds to
70138 microseconds.
2015-01-29T01:18:40.020Z cpu3:1017298)World: 14302: VC opID hostd-4a68 maps to vmkernel opID d3ab44c2
2015-01-29T01:18:46.064Z cpu11:32808)ScsiDeviceIO: 1203: Device t10.94544500000000003160CF76E9DAD80719EEDFCF79274645 performance has improved. I/O latency reduced from 70138 microseconds to
39215 microseconds.
2015-01-29T01:19:00.020Z cpu8:1017139)World: 14302: VC opID hostd-42e4 maps to vmkernel opID 81cf7823
2015-01-29T01:19:00.956Z cpu1:32798)WARNING: ScsiDeviceIO: 1223: Device t10.94544500000000003160CF76E9DAD80719EEDFCF79274645 performance has deteriorated. I/O latency increased from average
value of 20247 microseconds to 482250 microseconds.
2015-01-29T01:19:00.960Z cpu1:32798)WARNING: ScsiDeviceIO: 1223: Device t10.94544500000000003160CF76E9DAD80719EEDFCF79274645 performance has deteriorated. I/O latency increased from average
value of 20247 microseconds to 1033394 microseconds.
2015-01-29T01:19:01.015Z cpu2:1017298)World: 14302: VC opID hostd-6997 maps to vmkernel opID 84d9dae9
2015-01-29T01:19:01.102Z cpu1:32798)ScsiDeviceIO: 1203: Device t10.94544500000000003160CF76E9DAD80719EEDFCF79274645 performance has improved. I/O latency reduced from 1033394 microseconds to
202275 microseconds.
2015-01-29T01:19:02.582Z cpu13:1017916)ScsiDeviceIO: 1203: Device t10.94544500000000003160CF76E9DAD80719EEDFCF79274645 performance has improved. I/O latency reduced from 202275 microseconds
to 40081 microseconds.
```

Synology®

DiskStation DS415+





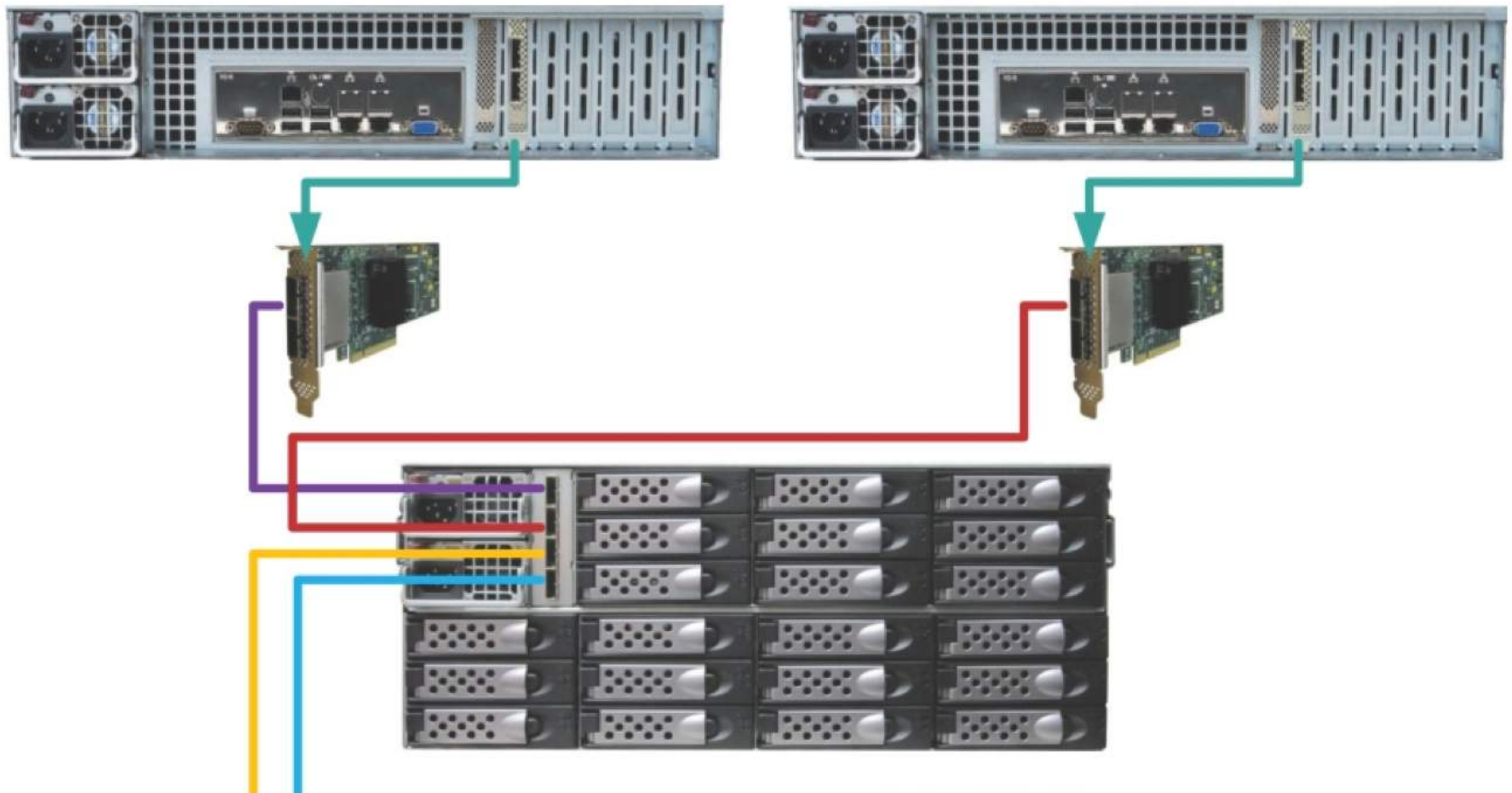
nexenta

Enterprise class storage for everyone



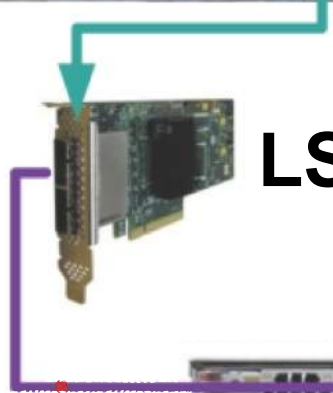
nexenta

Enterprise class storage for everyone





Dell R710



LSI 9207-8e HBA



16 Bay JBOD

Slow Hard Drive Storage (RAID-Z2)



Automatic
with OS/ File
system

Faster SSD Storage (L2ARC)



Automatic
with OS/ File
system

Fast RAM Storage (ARC)





Community Edition Features

- 100% Free
- ZFS
- Thin Provisioning
- Replication
- Snapshots
- VAAI
- Multi-Protocol
 - NFS
 - iSCSI
 - Fibre Channel*


```
fsb: 0 gsb: ffffffff090e71ea80 ds: 4b
es: 4b fs: 0 gs: 1c3
trp: e err: 0 rip: ffffffff7e1dc24
cs: 30 rfl: 10282 rsp: ffffffff003d6228e0
ss: 38
```

```
ffffffffff003d6226d0 unix:die+df ()
ffffffffff003d6227e0 unix:trap+db3 ()
ffffffffff003d6227f0 unix:cmntrap+e6 ()
ffffffffff003d622900 ahci:ahci_add_doneq+14 ()
ffffffffff003d6229a0 ahci:ahci_mop_commands+318 ()
ffffffffff003d622a20 ahci:ahci_timeout_pkts+1cb ()
ffffffffff003d622ab0 ahci:ahci_watchdog_handler+16c ()
ffffffffff003d622b00 genunix:callout_list_expire+98 ()
ffffffffff003d622b30 genunix:callout_expire+3b ()
ffffffffff003d622b60 genunix:callout_execute+20 ()
ffffffffff003d622c20 genunix:taskq_thread+2d0 ()
ffffffffff003d622c30 unix:thread_start+8 ()
```

```
syncing file systems... done
dumping to /dev/zvol/dsk/syspool/dump, offset 65536, content: kernel + curproc
0:54 100% done
100% done: 1026116 pages dumped, dump succeeded
rebooting...
```



Community Edition Limits

- Non-Prod Use **ONLY**
- 18TB Limit
- No Support

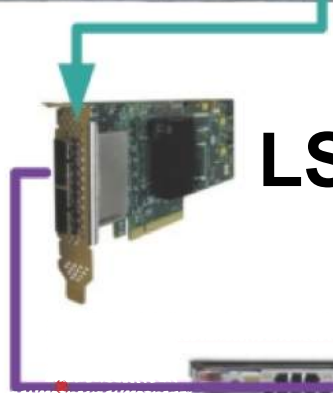


Community Edition HCL?

- R710s Work
- All Qlogic 4G & 8G Fibre Channel HBAs Work
- LSI 9207-8e HBAs **ONLY**
 - **Must be in IT mode**
- Some SAS Expanders Work
- Any hard drive on the LSI 9207-8e HCL should work*
 - Use **ONLY 7200 RPM SAS** drives
 - SATA SSDs are usually OK
 - Samsung 850 PRO & EVO
 - Intel 320 160GB



Dell R710



LSI 9207-8e HBA



16 Bay JBOD

NEW Dell TYVGC LSI SAS 9207-8e 8-Channel 6Gb/s SAS PCIe 3.0 Host Bus Adapter

Item condition: **New**

Ended: Jan 10, 2015, 4:25PM

Quantity: More than 10 available / 3 sold

Price: **US \$179.95**

Bucks Join **eBay Bucks** and earn % back on this item. [See conditions](#)

Shipping: **FREE** Standard Shipping | [See details](#)

Item location: **Houston, Texas, United States**

Ships to: **Worldwide** | [See exclusions](#)

Delivery: **Estimated within 6 business days**

Payments: **PayPal**    

Credit Cards processed by PayPal

[See details](#)

Returns: **14 days money back or item exchange, buyer pays return shipping** | [See details](#)

Guarantee: **ebay** MONEY BACK GUARANTEE | [See details](#)

Get the item you ordered or get your money back.

Covers your purchase price and original shipping.



Seller information

rakicomputers (47953 )

99.4% Positive feedback


 [Follow this seller](#)

Visit store:  [Rakicomputers](#)

[See other items](#)

Mouse over image to zoom



 [Have one to sell?](#) [Sell now](#)

Description

Shipping and payments

[Print](#) | [Report item](#)

3U SGI Rackable SE3016 16 Caddies 3.5" SAS SATA Storage Expander JBOD NAS SAN

🔥 2 viewed per hour

Item condition: **Used**

“Tested to POST (power on self test) . For more thorough testing please purchase out SEWP Warranty” ... [Read more](#)

Time left: 9d 10h 2/13, 7:15PM

Quantity: 10 available

Price: **US \$144.95**

Buy It Now

Add to cart

Best Offer:

Make Offer

2 watching

[Add to watch list](#)

[Add to collection](#)

30-day returns

Located in United States

Best offer available

Shipping: **\$35.00** Standard Shipping | [See details](#)

Item location: Santa Clara, California, United States

Ships to: United States, Canada

Delivery: Estimated between **Tue. Feb. 10** and **Tue. Feb. 17** 🕒

Payments: **PayPal** **VISA** **MasterCard** **AMERICAN EXPRESS** **DISCOVER**

Credit Cards processed by PayPal

[See details](#)

Returns: 30 days money back or item exchange, buyer pays return shipping | [See details](#)

Guarantee: **ebay** MONEY BACK GUARANTEE | [See details](#)

Get the item you ordered or get your money back.
Covers your purchase price and original shipping.

Seller information

mrrackables (48)

98.9% Positive feedback

[Follow this seller](#)

Visit store: [mrrackables](#)

[See other items](#)



Mouse over image to zoom

\$ Have one to sell? [Sell now](#)

People who viewed this item also viewed 🕒

Seagate 2TB Constellation ES 3.5" SAS 64MB 6Gb/s Hard Drive ST2000NM0001

Item condition: **Used**

Ended: Jan 27, 2015, 12:04PM

Quantity: 0 available / 24 sold

Price: **US \$99.99**

Bucks Join **eBay Bucks** and earn % back on this item. [See conditions](#)

Shipping: **\$7.99** Standard Shipping | [See details](#)

Item location: Eatontown, New Jersey, United States

Ships to: United States and many other countries | [See details](#)

Delivery: Estimated within 5 business days

Payments: **PayPal**    

Credit Cards processed by PayPal

[See details](#)

Returns: 30 days money back or item exchange, buyer pays return shipping | [See details](#)

Guarantee: **ebay** MONEY BACK GUARANTEE | [See details](#)

Get the item you ordered or get your money back.
Covers your purchase price and original shipping.



Seller information

krusecom (3393 ★)


99.8% Positive feedback

[+ Follow this seller](#)

Visit store:  [krusecom](#)

[See other items](#)



 Have one to sell?

[Sell now](#)

[Description](#)

[Shipping and payments](#)

[Print](#) | [Report item](#)



[Shop All Stores](#) ▾

Keywords, Model # or Item #

Search all ▾

[Marketplace](#) ▾

Home > Computers & Tablets > All Laptop Accessories > Internal SSDs > SAMSUNG > Item#: 9SIA4P02CG6186

PRODUCT TOUR



SAMSUNG 850 Pro Series MZ-7KE128BW 2.5" 128GB SATA III 3-D Vertical Internal Solid State Drive (SSD)

★★★★★ (34) | [Write a Review](#)

In stock. Limit 2 per customer.

- 2.5"
- 128GB
- SATA III

[Ask Or Answer A Question](#)

See 11 questions | 108 answers

[f Like](#) 0 |
 [g+1](#) 0 |
 [Email](#)

Loading...

[Overview](#) |
 [Specifications](#) |
 [Reviews](#)

QTY:
PREMIER
~~\$139.99~~
\$110.99
 Save: \$29.00 (21%)
 \$2.99 Shipping (restrictions apply)

Sold and Shipped by:
Newegg

Capacity: 128GB

►

[Add to Wish List](#) |
 [Price Alert](#)

More Buying Options

Newegg
 \$110.99
 +\$2.99 Shipping
 ►

antonline.com
 \$120.84
 +FREE SHIPPING AVAILABLE
 ►

Beach Audio
 ►



[Shop All Stores](#)

Keywords, Model # or Item #

Search all [SEARCH](#)

[Marketplace](#)

Home > Computers & Tablets > All Laptop Accessories > Internal SSDs > SAMSUNG > Item#: 9SIA1J22CK9323

[PRODUCT TOUR](#)



SAMSUNG 850 EVO-Series MZ-75E120B/AM 2.5" 120GB SATA III 3-D Vertical Internal Solid State Drive (SSD)

★★★★☆ (11) | [Write a Review](#)

In stock.

- 2.5"
- 120GB
- SATA III

[Ask Or Answer A Question](#)

[See 12 questions | 64 answers](#)

[Like](#) 0
 [+1](#) 0
 [Email](#)

FREE SHIPPING AVAILABLE

QTY:

\$87.99

Sold and Shipped by:
17th street photo supply inc
★★★★☆ (136)

Capacity: 120GB

Protect Your Investment!

1 Year Extended Replacement Plan **\$6.00**
 (more options)

[ADD TO CART](#)

[Add to Wish List](#)
[Price Alert](#)

SAMSUNG 850 EVO-Series **\$87.99**

May We Suggest

Shop by Department

Search

All newer 2.5 to 3.5

Go

Hello, Thomas Your Account

Computers Brands Best Sellers Laptops & Tablets Desktops & Monitors Hard Drives & Storage Computer Accessories Tablet Accessories PC Components PC Gaming Deals All Electronics

Electronics > Computers & Accessories > Cables & Accessories > Hard Drive Enclosures



You purchased this item on December 18, 2014.

[View this order](#)



Click to open expanded view

Newer Technology AdaptaDrive 2.5" to 3.5" Drive Converter Bracket.

by NewerTech

★★★★★ 201 customer reviews | 5 answered questions

Price: \$14.50 Prime

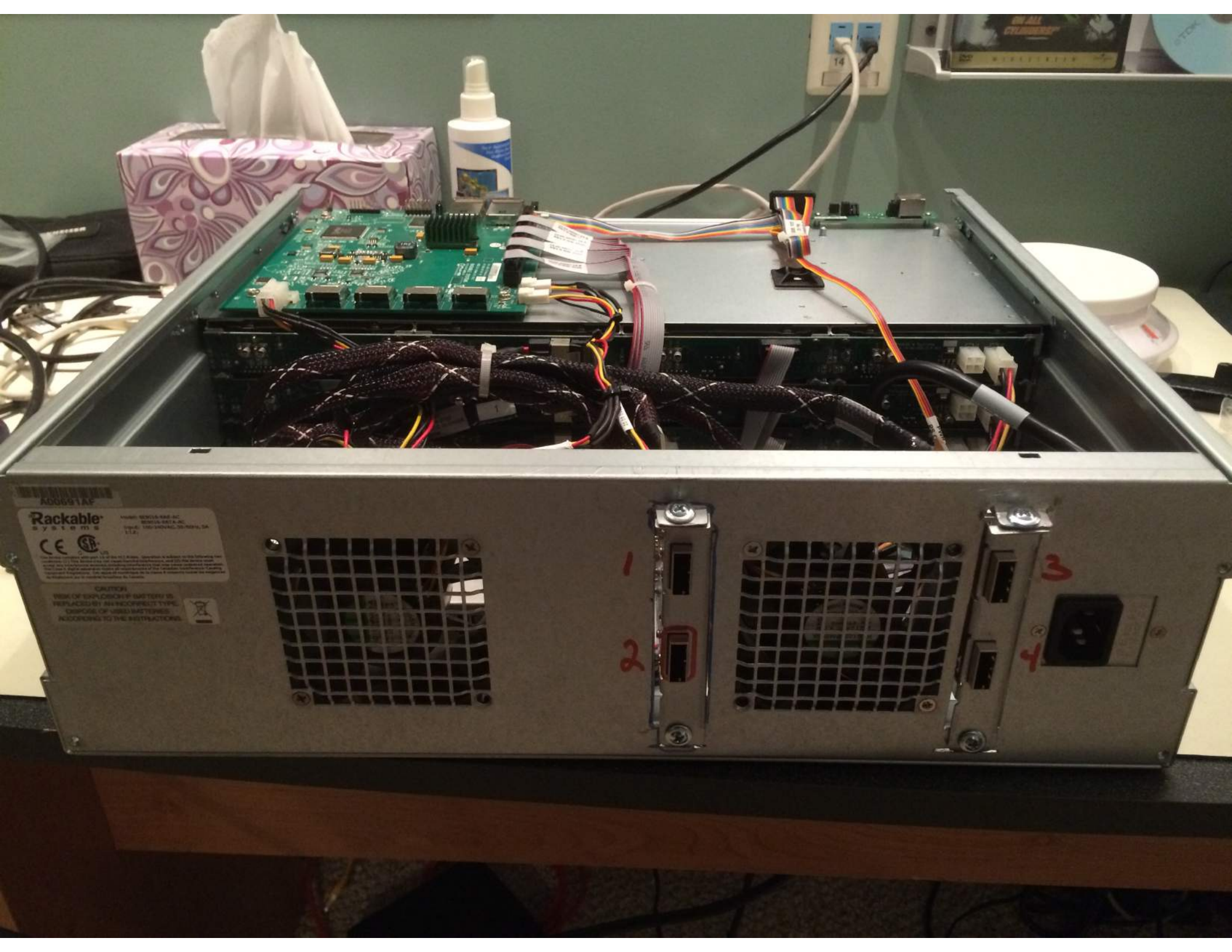
In Stock.

Sold by Newer Galaxy Distribution Company, LLC and Fulfilled by Amazon. Gift-wrap available.

Want it Thursday, Feb. 5? Order within 1 hr 41 mins and choose Two-Day Shipping at checkout. [Details](#)

- Compatible with any 2.5-Inch SATA hard drive or Solid State drive
- Fits all 3.5-Inch SATA drive bays
- Includes compatibility with backplane trays such as those found in Apple Mac Pro models
- Fully SATA 3.0 Revision (6Gb/s) compatible and Backward compatible with SATA 2.0 Revision (3Gb/s) and 1.0 Revision (1.5Gb/s) drives
- Open design allows for full air flow for proper drive cooling, Solid aluminum frame design

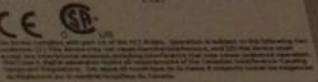
3 new from \$14.50



A00691A5

Rackable
systems

MODEL: 907018-001-02
SERIAL: 907018-001-02
DATE: 10/10/04 10:00:00 SA
112



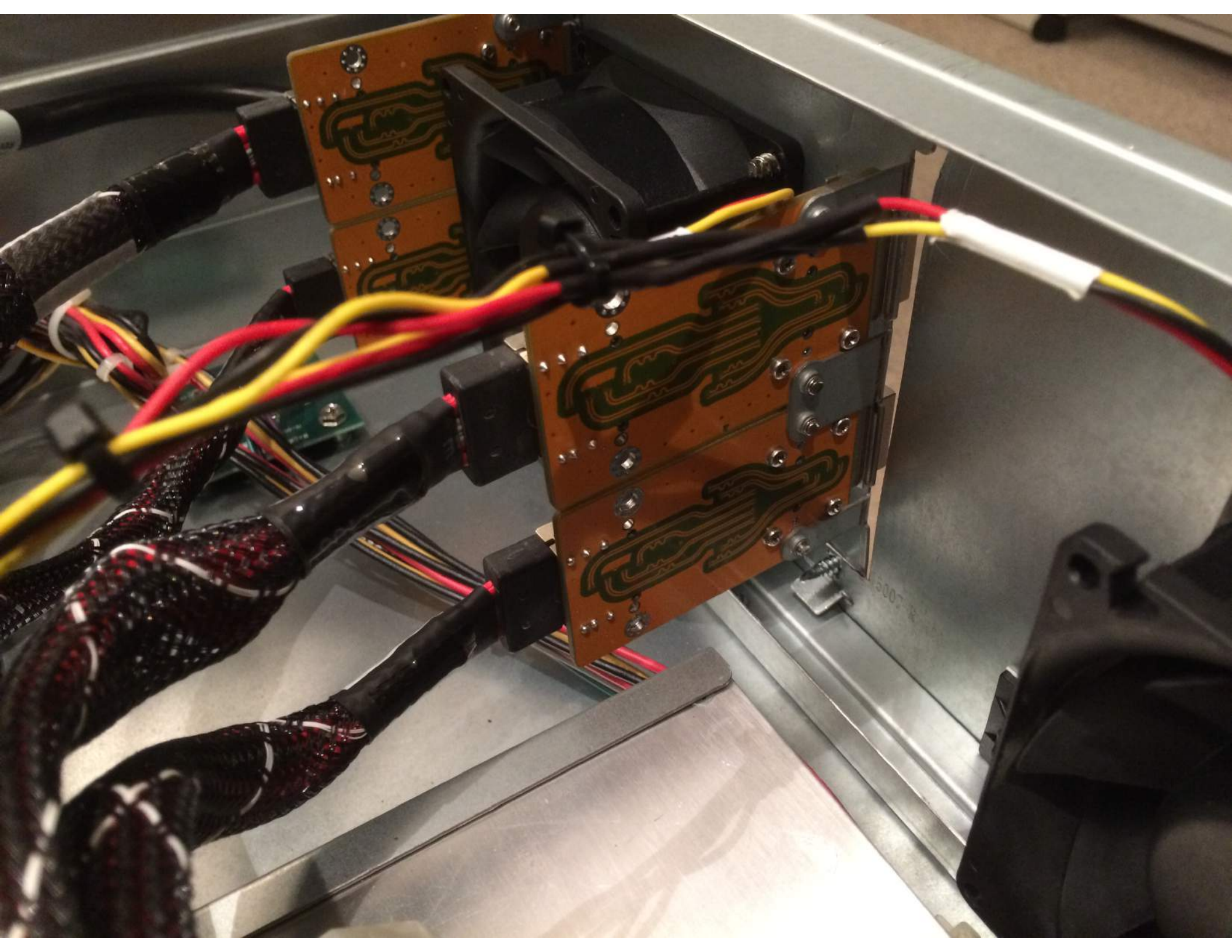
CAUTION:
RISK OF EXPLOSION IF BATTERY IS
REPLACED BY AN INCORRECT TYPE.
DISPOSE OF USED BATTERIES
ACCORDING TO THE INSTRUCTIONS.

1

2

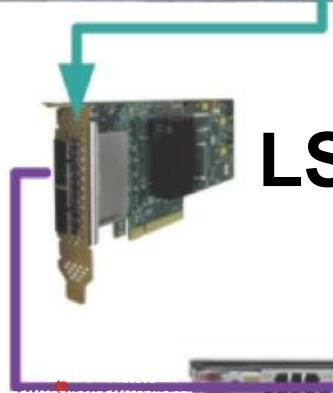
3

4





Dell R710

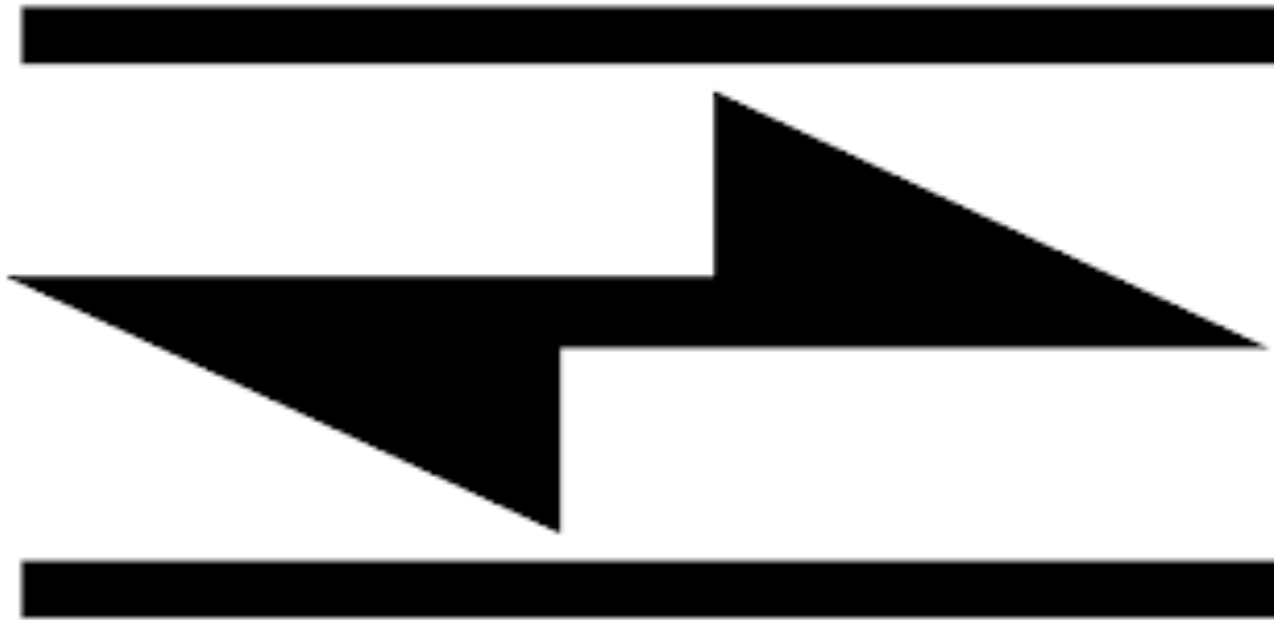


LSI 9207-8e HBA



16 Bay JBOD

4.25Gb/s Fibre Channel





Mouse over image to zoom

Have one to sell? [Sell now](#)

DELL QLogic Dual Port Fiber Channel PCI-E QLE2462-DELL PX2510401 DH226

Item condition: **Used**

Time left: 5d 14h Monday, 1:02PM

Quantity: More than 10 available

Price: **US \$11.49**

[Buy It Now](#)

[Add to cart](#)

Best Offer:

[Make Offer](#)

1 watching

[Add to watch list](#)

[Add to collection](#)

Free shipping

Hassle-free returns

100% positive feedback

Shipping: **FREE** Standard Shipping | [See details](#)

Item location: Forney, Texas, United States

Ships to: United States, Europe, Canada, Australia

Delivery: Estimated on or before **Tue. Feb. 10** to 16057

Payments: [PayPal](#)

Credit Cards processed by PayPal

[See details](#)

Returns: **Hassle-free returns** | [Learn more](#)

14 days money back or item exchange, you pay return shipping

Guarantee: **ebay MONEY BACK GUARANTEE** | [See details](#)

Get the item you ordered or get your money back.

Covers your purchase price and original shipping.

[Add to watch list](#)

Seller information

donedealitsolutionslc (92)

100% Positive feedback



[Follow this seller](#)

[See other items](#)

Verizon Ellipsis™ 7 Tablet
NOW \$1999
New 2-yr activation req'd.

People who viewed this item also viewed



DELL QLogic Dual Port Fiber Channel PCI-E...

\$14.95

[Buy It Now](#)



Dell DH226 0DH226 QLogic QLE2462 Du...

\$11.95

[Buy It Now](#)



Dell QLogic DH226 QLE2462...

\$55.00

[Buy It Now](#)
Free shipping



Dell Qlogic QLE2462 Dual Port 4GB PCI-E ...

\$24.99

[Buy It Now](#)



DELL QLOGIC KC184 DH226 QLE2462 4...

\$49.00

[Buy It Now](#)
Free shipping



Dell QLogic QLE2462 Dual Port 4GB PCI-E ...

\$19.99

[Buy It Now](#)

Feedback on our suggestions

Description

[Shipping and payments](#)

[Print](#) | [Report item](#)



Shop by category

Search...

All Categories

Search

Advanced

Back to search results | Listed in category: Computers/Tablets & Networking > Enterprise Networking, Servers > Server Components > Other

Qlogic QLE2464 PX2610401-02 SANBlade Quad Port 4GB PCI-E Server Host Bus Adapter

1 watched in last 24 hours

Item condition: **Used**

[social icons] | Add to watch list

Price: **US \$23.00**

Buy It Now

Add to cart

Best Offer:

Make Offer

1 watching

Add to watch list

Add to collection

Free shipping

100% positive feedback

Best offer available

Shipping: **FREE** Standard Shipping | See details

Item location: United States

Ships to: United States and many other countries | See details

Delivery:



On or before **Mon. Feb. 09** to 16057

Estimated by eBay **FAST 'N FREE**

Payments:



Credit Cards processed by PayPal

See details

Returns: **14 days money back**, buyer pays return shipping | See details

Guarantee: **ebay MONEY BACK GUARANTEE** | See details

Get the item you ordered or get your money back.

Covers your purchase price and original shipping.

Seller information

boardroom_tech (2569 ★)

100% Positive feedback



Follow this seller

Visit store: Boardroom Technolo...

See other items

Run your entire business from one place.



Try it Free

Mouse over image to zoom

Have one to sell? Sell now

People who viewed this item also viewed

Feedback on our suggestions



Shop by category

Search...

All Categories

Search

Advanced

Back to search results | Listed in category: Computers/Tablets & Networking > Enterprise Networking, Servers > Server Components > Disk Controllers, RAID Cards

Intel Pro/1000 Dual PORT GIGABIT ETHERNET PCIe NIC Card EXPI9402PT

1 sold in last hour

Item condition: **Seller refurbished**

| [Add to watch list](#)

Quantity: More than 10 available / **87 sold**

Price: **US \$39.00**

Buy It Now

Add to cart

20 watching

[Add to watch list](#)

[Add to collection](#)

Free shipping

Located in United States

87 sold

Seller information

mobile_computer_pros (6642)

99.6% Positive feedback

[Follow this seller](#)

Visit store: [NEW ERA SOLUTION INTL](#)

[See other items](#)

Shipping: **FREE** Standard Shipping | [See details](#)

Item location: **Carrollton, Texas, United States**

Ships to: **Worldwide**

Delivery: **Estimated between Thu. Feb. 5 and Thu. Feb. 12**

Use [One-day Shipping](#) to get it by Feb. 5

Payments:

Credit Cards processed by PayPal

[See details](#)

Returns: **14 days money back or item exchange, buyer pays return shipping** | [See details](#)

Guarantee: **ebay MONEY BACK GUARANTEE** | [See details](#)

Get the item you ordered or get your money back.

Covers your purchase price and original shipping.

Mouse over image to zoom



Have one to sell? [Sell now](#)

Fibre Channel Costs

- 2x Dual Port HBA @ \$11.50 - \$23.00
- 1x Quad Port HBA @ \$23.00
- 4x LC to LC Fiber Cable @ \$9.98

Grand Total: \$85.92



Enable Fibre Channel

SSH into the box and run these commands:

```
update_drv -d -i 'pciex1077,2432' qlc  
update_drv -a -i 'pciex1077,2432' qlt
```

ESXi 1

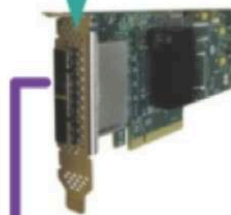
ESXi 2



2x 4.25 Gb/s FC
RR MPIO (8.5Gb/s)



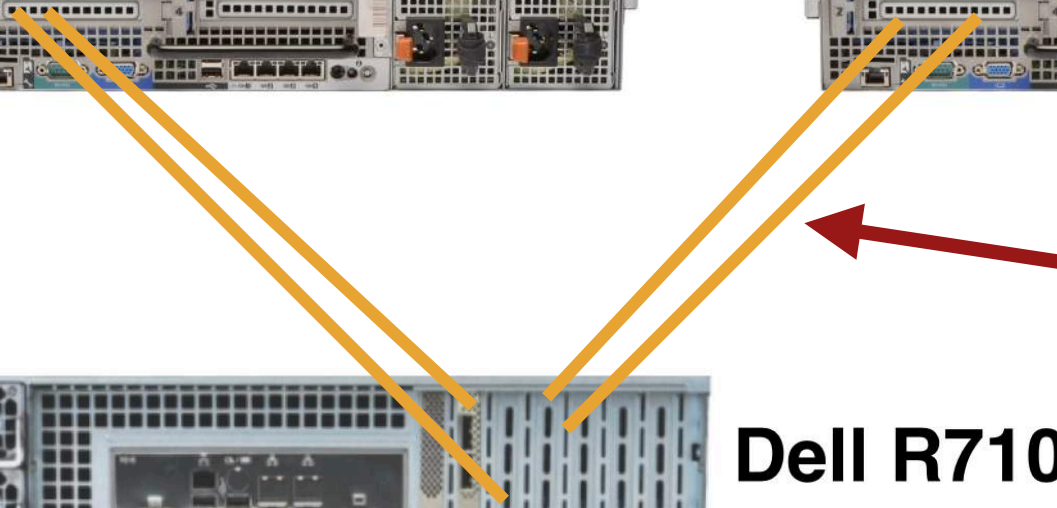
Dell R710



LSI 9207-8e HBA



16 Bay JBOD





Topology

- All Managers
 - VRANGER
 - Worker 1

Disk Targets | Network Targets | Access Specifications | Results Display | Test Setup

Drag managers and workers from the Topology window to the progress bar of your choice. Record last update results to file

Results Since: Start of Test Last Update

Update Frequency (seconds): 5

Display

Total I/Os per Second	All Managers	102470.36	1e+006
Total MBs per Second (Decimal)	All Managers	419.72 MBPS (400.27 MiBPS)	1000
Average I/O Response Time (ms)	All Managers	0.6243	1
Maximum I/O Response Time (ms)	All Managers	32.5875	100
% CPU Utilization (total)	All Managers	30.96 %	100 %
Total Error Count	All Managers	0	0



Disk Targets | Network Targets | Access Specifications | Results Display | Test Setup

Topology

- All Managers
 - VRANGER

Drag managers and workers from the Topology window to the progress bar of your choice.

Record last update results to file

Results Since

Start of Test

Last Update

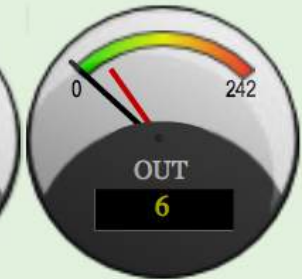
Update Frequency (seconds)

2

Display

	All Managers		
Total I/Os per Second		41602.64	100000
Total MBs per Second (Decimal)		170.40 MBPS (162.51 MiBPS)	1000
Average I/O Response Time (ms)		1.5379	10
Maximum I/O Response Time (ms)		149.5149	1000
% CPU Utilization (total)		16.02 %	100 %
Total Error Count		0	0

I/O, KB/Sec



Disk I/O, KB/Sec



...ly gauges update every 5 seconds. You can change this interval [here](#)

Value

Thu Jan 08 22:20:53 2015 EST

US/Eastern

Thu Jan 08 22:01:13 2015 EST

0.81, 0.88, 0.67

40-0-45

40-0-36

40-0-43

4.0.3

49139MB

34746MB

NexentaStor CE Cost

Hardware Pricing: (eBay)

- \$575 - R710 w/72GB RAM
- \$130 - LSI 9207-8e HBA
- \$175 - JBOD
- \$520 - 7200 RPM Disks
- \$300 - ZIL & L2ARC SSDs
- \$86 - Fibre Channel Solution (all)

NexentaStor CE Cost

Hardware Pricing: (eBay)

- \$575 - R710 w/72GB RAM
- \$130 - LSI 9207-8e HBA
- \$175 - JBOD
- \$520 - 7200 RPM Disks
- \$300 - ZIL & L2ARC SSDs
- \$86 - Fibre Channel Solution (all)

Total: \$1614

What about vSAN?



NETGEAR[®]



Mouse over image to zoom



Have one to sell? Sell now

NETGEAR PROSAFE 24 PORT GSM7328S L3 GIGABIT ETHERNET NETWORK SWI

Item condition: **For parts or not working**

Sale ends in: 01d 21h 56m

Was: C \$149.99

You save: **C \$74.94 (50% off)**

Price: **C \$74.95**
Approximately US \$59.63

Buy It Now

Best Offer:

2 watching

Make Offer

[Add to watch list](#)

[Add to collection](#)

50% savings

Experienced seller

Shipping: **C \$33.00 (approx. US \$26.26)** Standard Int'l Shipping | [See details](#)

See details about international shipping here.

Item location: **Calgary, Alberta, Canada**

Ships to: **Canada, United States** | [See exclusions](#)

Delivery: **Estimated between Thu. Feb. 19 and Thu. Feb. 26**

Seller ships within 3 days after receiving cleared payment.

Payments: **PayPal**

Credit Cards processed by PayPal

[See details](#)

Returns: Seller does not offer returns. You are covered by the **eBay Money Back Guarantee** if you received an item that is not as described in the listing.

Guarantee: **ebay** MONEY BACK GUARANTEE | [See details](#)

Get the item you ordered or get your money back.
Covers your purchase price and original shipping.

Seller
calgary
99.9% P
+ Follow
Visit store
See other

YOU
RE
GU

Power



Back to search results | Listed in category: Computers/Tablets & Networking > Power Protection, Distribution > Uninterruptible Power Supplies

APC Back-Ups PRO 1100 Battery Back-Up Power Supply BP1100 BP1000

Item condition: **Used**

Time left: 1 day Friday, 11:00PM

Starting bid: **US \$5.00**

[0 bids]

Place bid

Enter US \$5.00 or more

[Add to watch list](#)

[Add to collection](#)

100% positive feedback

Shipping: **\$40.00** Economy Shipping | [See details](#)

Item location: Atlanta, Georgia, United States

Ships to: United States and many other countries | [See details](#)

Delivery: Estimated between **Sat. Feb. 14 and Mon. Feb. 23**

Payments: **PayPal**

Credit Cards processed by PayPal

[See details](#)

Returns: Seller does not offer returns. You are covered by the [eBay Money Back Guarantee](#) if you received an item that is not as described in the listing.

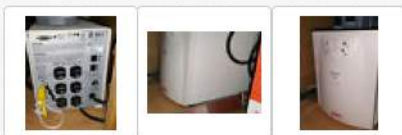
Guarantee: **ebay** MONEY BACK GUARANTEE | [See details](#)

Get the item you ordered or get your money back.

Covers your purchase price and original shipping.



Mouse over image to zoom



\$ Have one to sell? [Sell now](#)



Mouse over image to zoom



APC Back-Ups PRO 1100 Battery Back-Up Power Supply BP1100 BP1000

Item condition: **Used**

Time left: 3d 11h Monday, 9:50AM

Starting bid: **US \$27.99**

[0 bids]

Enter US \$27.99 or more

Place bid

[Add to watch list](#)

[Add to collection](#)

100% positive feedback

Shipping: **\$22.07** Standard Shipping | [See details](#)

Item location: **Manchester, Maryland, United States**

Ships to: **United States** [See exclusions](#)

Delivery: **Estimated between Fri. Feb. 13 and Fri. Feb. 20**

Payments:

Credit Cards processed by PayPal

[See details](#)

Returns: **Seller does not offer returns. You are covered by the eBay Money Back Guarantee** if you received an item that is not as described in the listing.

Guarantee: **ebay MONEY BACK GUARANTEE** | [See details](#)

Get the item you ordered or get your money back.
Covers your purchase price and original shipping.

\$ Have one to sell?

Sell now

Who viewed this item also viewed

\$ SAVE MORE WHEN YOU ADD RELATED ITEMS [See all eligible items ▶](#)



UPG APC BACKUPS PRO 1000 Replacement Battery 1

great seller, great prices and great service

Item condition: **New**

Quantity:

More than 10 available / 3 sold

Price: **US \$28.99**

Buy It Now

Add to cart

[Add to watch list](#)

[Add to collection](#)

Free shipping

New condition

Shipping: **FREE** Standard Shipping | [See details](#)

Item location: **Brooklyn, New York, United States**

Ships to: **Worldwide** | [See exclusions](#)

Delivery: Estimated between **Wed. Feb. 11** and **Wed. Feb. 18**
Use **Expedited Shipping** to get it by Feb. 16 [?](#)

Payments: **PayPal**    

Credit Cards processed by PayPal

[See details](#)

Returns: **14 days money back, buyer pays return shipping** | [See details](#)

Guarantee: **ebay MONEY BACK GUARANTEE** | [See details](#)

Get the item you ordered or get your money back.
Covers your purchase price and original shipping.

\$ Have one to sell?

Sell now

Energy Costs

	A	B	C	D	E	F	G
1	Device	Hours/Day	Amps	Watts	KWa / Mo	\$ / Mo	
2	HVAC Running	0	5.4	594	0	\$0.00	
3	HVAC Idle	0	1	110	0	\$0.00	
4	Fan	24	0.5	55	40.1412	\$3.00	
5	ESXi1	24	1.45	159.5	116.40948	\$8.70	
6	ESXi2	24	1.45	159.5	116.40948	\$8.70	
7	Nexenta Server	24	2.2	242	176.62128	\$13.19	
8	Nexenta JBOD	24	1.75	192.5	140.4942	\$10.49	
9	vRanger	24	0.75	82.5	60.2118	\$4.50	
10	HP 3500yl	24	0.3	33	24.08472	\$1.80	
11	HP L2 SW	24	0.3	33	24.08472	\$1.80	
12	SonicWALL	24	0.2	22	16.05648	\$1.20	
13	Balance	24	0.2	22	16.05648	\$1.20	
14				0	0	\$0.00	
15				0	0	\$0.00	
16				0	0	\$0.00	
17	Totals		15.5	1705	730.56984	\$54.57	
18							

Cooling



INSUL-TUBE NP77

WESTPOINTE
W



Power Bill here

Dell R710





iPower

WW. iPowerGrowLight

Voltage 110V/120V

Frequency 60Hz

Air Flow Direction

Farm Innovators TC-21 Warm Weather Thermo Cube Thermostatically Controlled Outlet - On at 78-Degrees/Off at 70-Degrees

by [Farm Innovators](#)

★★★★☆ | 951 customer reviews | 36 answered questions



Click to open expanded view

List Price: \$18.99

Price: **\$16.70** ✓Prime

You Save: **\$2.29** (12%)

Only 10 left in stock (more on the way).

Ships from and sold by Amazon.com. Gift-wrap available.

Want it Saturday, Feb. 7? Order within **15 hrs 51 mins** and choose **Saturday Delivery** at checkout. [Details](#)

Size: **On at 78, Off at 70**

On at 0, Off at 10
\$11.99 ✓Prime

On at 20, Off at 30
\$15.59 ✓Prime

On at 35, Off at 45
\$13.49 ✓Prime

On at 78, Off at 70
\$16.70 ✓Prime

On at 120, Off at 100
\$15.21 ✓Prime

- Plugs into a standard 15 amp electrical outlet and turns power on automatically according to outside air temperature
- Saves money by using power only when temperatures require cooling
- Two receptacles for use with more than one electrical device
- Turns on at 78°F, off at 70°F
- Ideal for all types of home, farm and industrial fans: window, ceiling, exhaust, ventilators, attic, roof, air circulator and table fans

5 new from **\$11.57** 2 used from **\$9.99**

Have Questions About Buying Light Bulbs? Check out our [Light Bulb Guide](#) for help choosing the correct bulb for your lighting needs. [Learn more](#)

Back to Business

Start the New Year with business essentials, including [janitorial supplies](#), [workplace safety products](#), [office supplies](#), & more. [Shop now](#)

Back to Business

What about the
software?



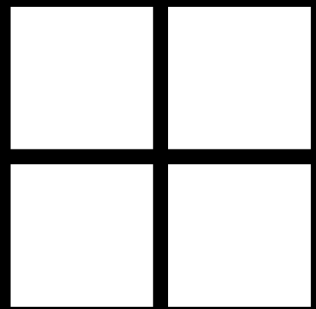
1 Year NFR Licenses

<http://www.vmug.com/EVALExperience>

- VMware vCenter Server™ 5 Standalone for vSphere 5
- VMware vSphere® with Operations Management™ Enterprise Plus
- VMware vCloud Suite® Standard
- VMware vRealize™ Operations Insight™
- VMware vRealize Operations™ 6 Enterprise
- VMware vRealize Log Insight™
- VMware vRealize Operations for Horizon®
- VMware Horizon® Advanced Edition
- VMware Virtual SAN™

vmware®

Other Options?

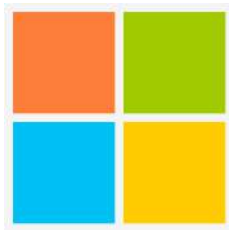


Microsoft



**MICROSOFT
TECHNET
1998 - 2013**





Microsoft® Action Pack Subscription

Available Software

- Windows 8.1
- Server 2012 R2 w/RDS CALs
- Office 2013
- Office 365 E3
- Visio 2013
- Project 2013
- SQL 2014 w/CALs
- Exchange 2013 w/CALs
- System Center 2012 R2
- Sharepoint Server 2013
- Lync Server 2013
- Lots More!

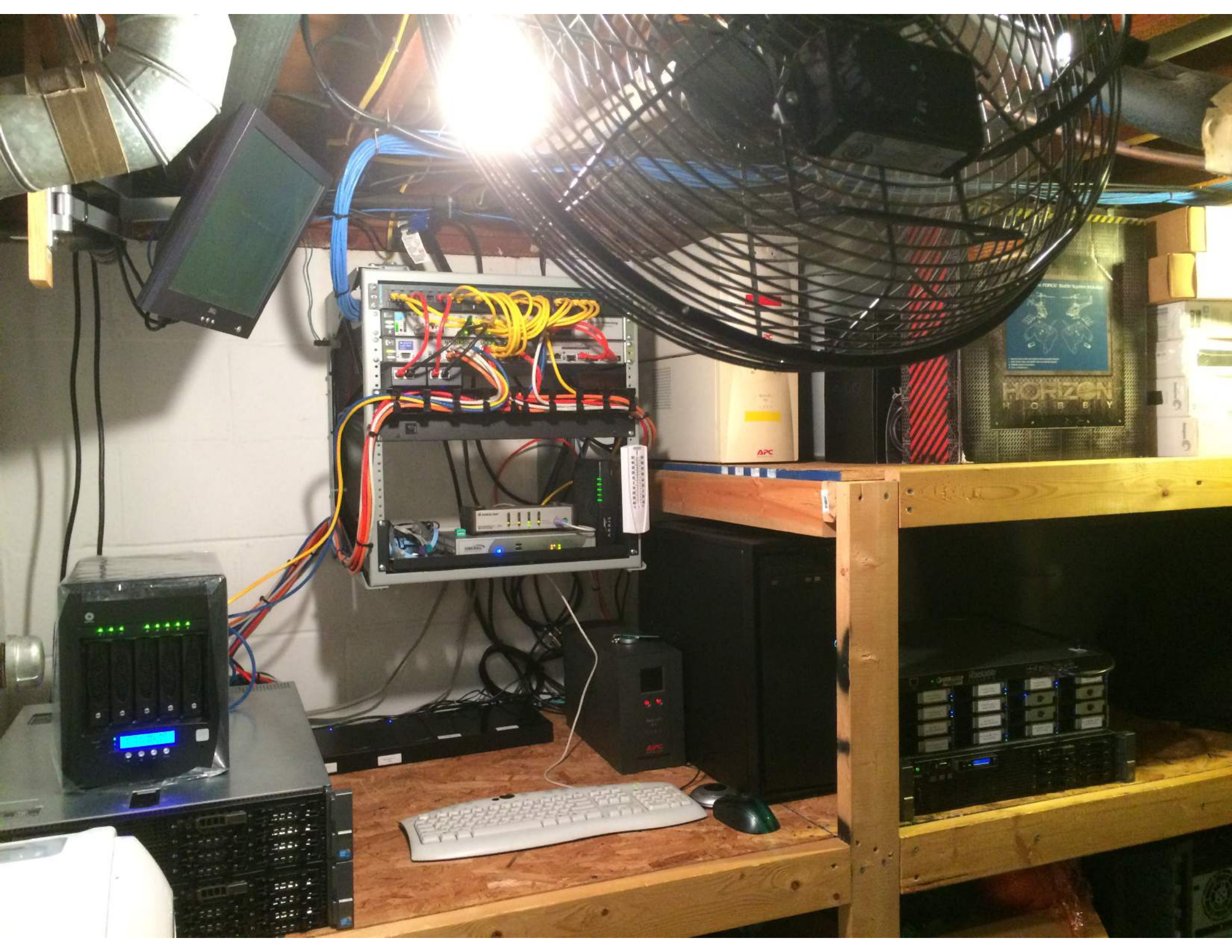


TechNet Evaluation Center

<http://www.microsoft.com/en-us/evalcenter/>

Example Trial Periods:

- Windows 7 - 90 Days
- Windows 8.1 - 90 Days
- Windows 2012 R2 - 180 days
- SQL 2012 - 180 Days
- Office 2013 - 60 Days





Rackable
systems

Primary Storage - 1
Seagate 2TB NS

Primary Storage - 2
Seagate 2TB NS

Primary Storage - 3
Seagate 2TB NS

Primary Storage - 4
Seagate 2TB NS

Primary Storage - 5
Seagate 2TB NS

Primary Storage - 6
Seagate 2TB NS

B-0

B-0

Talos SSD - 1
OCZ Talos C 960GB SAS

Talos SSD - 2
OCZ Talos C 220GB SAS

B-0

B-0

Primary Storage - LOG 1
Intel 320 160GB

Primary Storage - LOG 2
Intel 320 160GB

Primary Storage - Cache 1
Intel 320 160GB

Primary Storage - Cache 2
Intel 320 160GB

DELL

TB SAN
PowerEdge R710

0+
1+
2+
3+

4+
5+
6+
7+



HP server rack with various components and cables.

- HP logo and "HP" text are visible on the server faceplate.
- Multiple network ports and fiber optic connectors are present.
- Yellow and red cables are plugged into the ports.

Two APC Back-UPS Pro units stacked vertically.

- Top unit: APC Back-UPS Pro 1500, red label.
- Bottom unit: APC Back-UPS Pro 1500, yellow label.
- Both units feature the APC logo and "Back-UPS Pro" branding.

Network switch or patch panel with multiple ports and cables.

- Black faceplate with multiple RJ45 ports.
- Colorful Ethernet cables (yellow, red, blue, white) are plugged in.
- Black Velcro straps are used to organize the cables.

ARRIS modem/router with green status lights.

- ARRIS logo is visible on the side.
- Four green status LEDs are illuminated.
- Black faceplate with ventilation grilles.

SONICWALL firewall with blue status light.

- SONICWALL logo is visible on the front.
- A blue status LED is illuminated.
- Black faceplate with various ports and indicators.



- Primary_Cluster
 - esxi1.hq.intertrick.net
 - esxi2.hq.intertrick.net
 - House_Prod_VMs
 - Active_Directory_1
 - Active_Directory_2
 - Deep_Security
 - Retrospect
 - SQL_2012
 - UniFi_Controller
 - Unifi_NVR
 - vCenter
 - vRealize Operations Manager Appliance
 - vShield_Manager
 - Web_Server
 - VDI_Lab
 - F5
 - Other
 - database
 - hub
 - PCoIP_Management_Console_1.10.2-Template
 - TB-PCoIP_Management_Console_1.10.2
 - VMware HealthAnalyzer
 - VMware_AppVolumes
 - AppVolumes_Capture-1
 - AppVolumes_Capture-2
 - AV_Manager-1
 - AV_Manager-2
 - VMware_Mirage
 - VMware_ThinApp
 - TB - Win 7 32bit ThinApp Packager
 - TB - Win 7 64bit ThinApp Packager
 - TB - XP ThinApp Packager
 - Win7x64 IE8 ThinApp Packager
 - VMware_View
 - Core_View_Servers
 - TB - RDSH Host 1
 - TB - RDSH Host 2
 - TB - View Composer
 - TB - View CS-1
 - TB - View CS-2
 - TB - View CS-3
 - TB - View CS-4
 - TB - View SS-1
 - View_Masters
 - View_Pools
 - app-vol-pool-01
 - app-vol-pool-02
 - app-vol-pool-03
 - app-vol-pool-04
 - app-vol-pool-05
 - lc-cpa-s1-01
 - lc-cpa-s1-02
 - lc-cpa-s1-03
 - lc-cpa-s1-04
 - lc-cpa-s1-05
 - replica-50fae84f-7bde-41bb-8e45-0811ca20febd
 - replica-843a9812-90d6-4d78-8c60-c9ce4f85caf4
 - VMware_View-CPA-S2
 - View_CPA-S2_Composer
 - View_CPA-S2_CS1
 - View CPA-S2 ESXi1

Primary_Cluster

- Summary
- Virtual Machines
- Hosts
- DRS
- Resource Allocation
- Performance
- Tasks & Events
- Alarms
- Permissions
- Maps
- Profile Compliance
- Storage Views
- Update Manager

Name	State	Status	% CPU	% Memory	Memory Size	CPU Count	NIC Count	Uptime	Last Time Exited Sta
esxi1.hq.intertrick...	Connected	Normal	10	66	73715.02 MB	2	6	22 hours	Never
esxi2.hq.intertrick...	Connected	Normal	4	61	73715.02 MB	2	6	22 hours	Never

Search Inventory

5.0, 2403361

Configuration Tasks & Events Alarms Permissions Maps Storage Views Update Manager

View: **Datstores** Devices

Datstores

[Refresh](#) [Delete](#) [Add Storage...](#) [Rescan](#)

Identification	Status	Device	Drive Type	Capacity	Free	Type	Last Update	Alarm Actions	Storage I/O Control	Hardware Acceleration
AV-Apps-7	Normal	NEXENTA Fibre C...	Non-SSD	499.75 GB	498.80 GB	VMFSS	2/6/2015 8:21:06 AM	Enabled	Disabled	Supported
AV-WR-Vols-8	Normal	NEXENTA Fibre C...	Non-SSD	1,023.75 G	1,022.80 G	VMFSS	2/6/2015 8:21:06 AM	Enabled	Disabled	Supported
Clones-3	Normal	NEXENTA Fibre C...	Non-SSD	499.75 GB	481.90 GB	VMFSS	2/6/2015 8:40:06 AM	Enabled	Disabled	Supported
Clones-4	Normal	NEXENTA Fibre C...	Non-SSD	499.75 GB	491.34 GB	VMFSS	2/6/2015 8:39:55 AM	Enabled	Disabled	Supported
ESXi1-SSD	Normal	Local ATA Disk (t...	SSD	59.50 GB	4.03 GB	VMFSS	2/5/2015 12:44:58 PM	Disabled	Disabled	Unknown
Images-5	Normal	NEXENTA Fibre C...	Non-SSD	1,023.75 G	745.94 GB	VMFSS	2/6/2015 8:21:06 AM	Enabled	Disabled	Supported
Replicas-2	Normal	NEXENTA Fibre C...	Non-SSD	499.75 GB	374.93 GB	VMFSS	2/6/2015 8:40:06 AM	Enabled	Disabled	Supported
Servers-0	Normal	NEXENTA Fibre C...	Non-SSD	4.00 TB	2.50 TB	VMFSS	2/6/2015 8:21:06 AM	Enabled	Enabled	Supported
Servers-1	Normal	NEXENTA Fibre C...	Non-SSD	4.00 TB	2.36 TB	VMFSS	2/6/2015 3:51:02 AM	Enabled	Enabled	Supported
View-CPA-S2-6	Normal	NEXENTA Fibre C...	Non-SSD	499.75 GB	418.65 GB	VMFSS	2/6/2015 8:21:06 AM	Enabled	Disabled	Supported

Datstore Details

Prop

Cost?

- 2x ESXi Hosts @ \$600ea
 - R710s w/2x Quad Core 5620s & 72GB RAM
- Nexenta - \$1700
 - ~6TB Storage @ 50-100K IOPS & 420MB/s
- Network - \$350
- Power & Cooling - \$300

Total: \$3550

Coming Soon

<http://labs.intertrick.net>

Q&A

Thank You!